

ZOOMLION MICRO SCISSOR LIFTS

Comply with CE/ANSI/CSA Standard

HIGHLIGHTS

High Performance

- ▶ Efficient electric direct drive system
- ▶ Light weight only 1975lb/895kg
- ▶ Climbing up 30 percent grade slopes in a stowed position
- ▶ A maximum work height of 21ft 4in/6.5m
- ▶ Compact dimensions ideal for low and tight access applications

Cost Effectiveness

- ▶ Modularized and unitized parts design ideal for maintenance
- ▶ Drawer type tray easy to service
- ▶ Robust & build to last, reliable and safe

FEATURES

Standard Features

Proportional controls	On-board diagnostic
All motion alarm	Over tilt protective system
Fold-down handrails	Forklift pockets
Flashing amber beacon	Drivable at full height
Self-closing entry gate	Hour meter
Active pothole protection system	Extension deck (unidirectional)
Autobrake system	Charging protection system
Emergency descent system	Scissor maintenance prop
Emergency stop button	Load sensing system
Maintenance-free battery	Horn

Accessories & Options

- ▶ Platform work lights
- ▶ AC power to platform
- ▶ Air line to platform



ACCESS WITH ZOOMLION GREEN

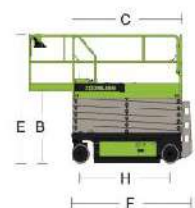
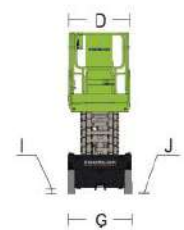
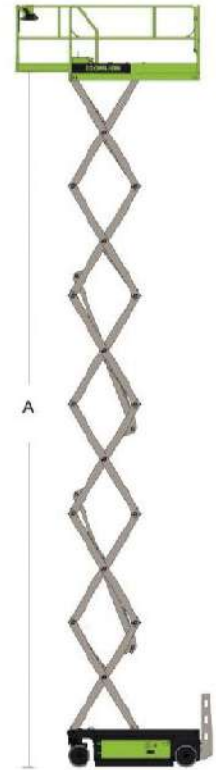
Phone: 0086(731)-88353680 0086(731)-88250971
E-mail: awm@zoomlion.com

Add: ZOOMLION Wangcheng Industrial Park, Tengfei Road 997, Changsha, Hunan, China
Web: www.en.zoomlion.com

MAIN SPECS OF MICRO SCISSOR LIFTS

Comply with CE/ANSI/CSA Standard

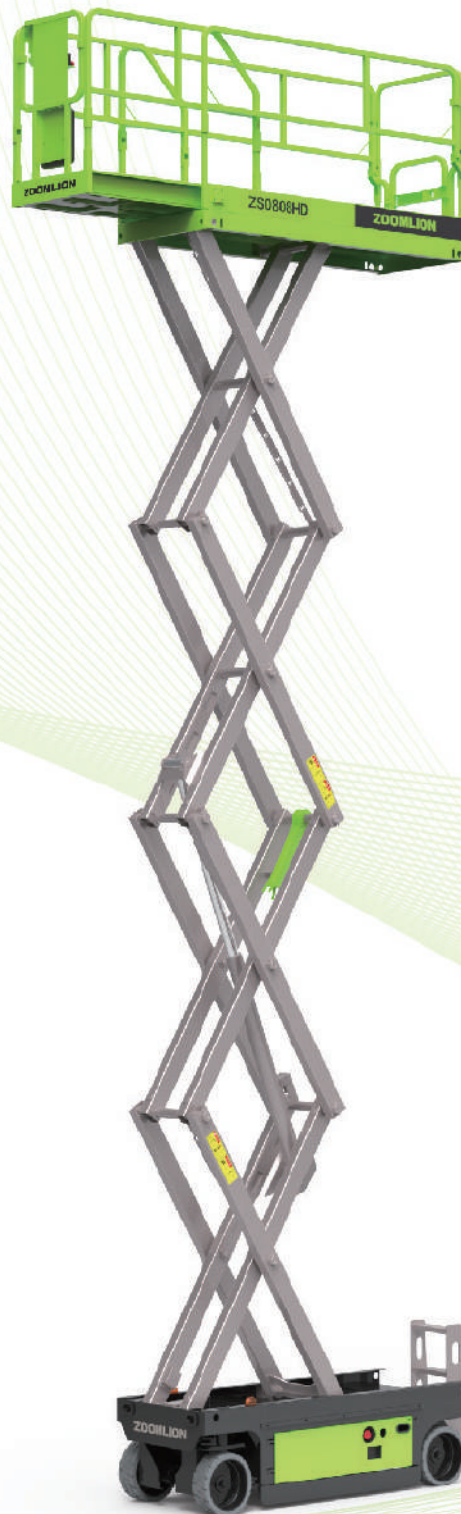
Model	Z50407DC		Z50407DC-Li	
	Imperial	Metric	Imperial	Metric
Size				
Work Height	21ft 4in	6.5m	21ft 4in	6.5m
A-Platform Height-Elevated	14ft 9in	4.5m	14ft 9in	4.5m
B-Platform Height-Stowed	3ft 1in	0.95m	3ft 1in	0.95m
C-Platform Length	4ft 3in	1.29m	4ft 3in	1.29m
D-Platform Width	2ft 4in	0.7m	2ft 4in	0.7m
Platform Extension	2ft	0.6m	2ft	0.6m
E-Overall Height (Rails Up)	6ft 9in	2.05m	6ft 9in	2.05m
Overall Height (Rails Down)	5ft 7in	1.7m	5ft 7in	1.7m
F-Overall Length	4ft 9in	1.44m	4ft 9in	1.44m
G-Overall Width	2ft 6in	0.76m	2ft 6in	0.76m
H Wheelbase	3ft 5in	1.05m	3ft 5in	1.05m
I-Ground Clearance (Stowed)	2.4in	0.06m	2.4in	0.06m
J-Ground Clearance (Raised)	0.65in	0.017m	0.65in	0.017m
Performance				
Platform Capacity	530lb	240kg	530lb	240kg
Capacity on Deck Extension	220lb	100kg	220lb	100kg
Max. Number of Workers	2		2	
Drive Speed (Stowed)	2.5mph	4km/h	2.5mph	4km/h
Drive Speed (Raised)	0.5mph	0.8km/h	0.5mph	0.8km/h
Turning Radius (Inside)	1ft 4in	0.4m	1ft 4in	0.4m
Turning Radius (Outside)	5ft 3in	1.6m	5ft 3in	1.6m
Lifting Motor	24V/1.2KW		24V/1.2KW	
Drive Motor	24V/2×0.45KW		24V/2×0.45W	
Up/Down Time	23/25s		23/25s	
Gradeability	30%(17°)		30%(17°)	
Max. Working Slope (Lateral/Vertical)	1.5°/3°		1.5°/3°	
Control	Proportional Control		Proportional Control	
Drive	Rear Wheels		Rear Wheels	
Brake	Rear Wheels		Rear Wheels	
Tire	Ø9in×3in	Ø230mm×80mm	Ø9in×3in	Ø230mm×80mm
Power				
Battery	2×12V/85Ah		102Ah Li-ion Battery	
Charger	24V/15A		24V/15A	
Weight				
Gross	1975lb	895kg	1975lb	895kg



ZOOMLION SCISSOR LIFTS

HD SERIES

Comply with CE/ANSI/CSA Standard



HIGHLIGHTS

Cost Effectiveness

- ▶ Optimized design increases 20% more duty cycles with longer runtime
- ▶ Precision control for stable operation
- ▶ Large ground clearance (Pothole Protection retracted), great trafficability

Easy Maintenance & Service

- ▶ Common components and modular design, easy to maintenance
- ▶ Bilateral swing-out trays (battery & hydraulic), simple to service
- ▶ Robust & build to last, reliable and safe



FEATURES

Standard Features

Proportional controls	Drivable at full height
All motion alarm	Scissor maintenance prop
Fold-down handrails	Charging protection system
Flashing amber beacon	Extension deck (unidirectional)
Self-closing entry gate	Autobrake system
Emergency descent system	On-board diagnostic
Active pothole protection system	Emergency stop button
Hour meter	Over tilt protective system
Forklift pockets	Load sensing system
Horn	

Accessories & Options

- ▶ Air line to platform
- ▶ AC power to platform
- ▶ Platform work lights
- ▶ Maintenance-free battery

ACCESS WITH ZOOMLION GREEN

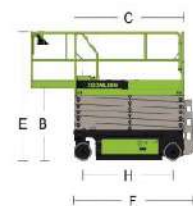
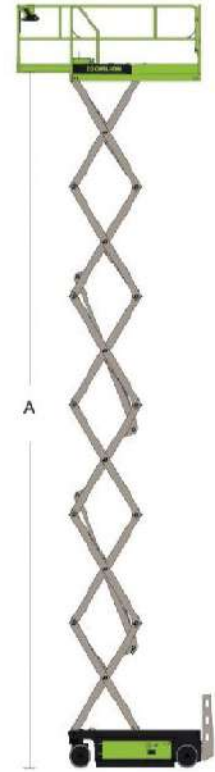
Phone: 0086(731)-88353680 0086(731)-88250971
E-mail: awm@zoomlion.com

Add: ZOOMLION Wangcheng Industrial Park, Tengfei Road 997, Changsha, Hunan, China
Web: www.en.zoomlion.com

MAIN SPECS OF SCISSOR LIFTS HD SERIES

Comply with CE/ANSI/CSA Standard

Model	ZS0607HD		ZS0608HD		ZS0808HD		ZS1012HD		ZS1212HD		ZS1414HD	
	Imperial	Metric	Imperial	Metric	Imperial	Metric	Imperial	Metric	Imperial	Metric	Imperial	Metric
Size												
Work Height	25ft 7in	7.8m	26ft 3in	8.00m	32ft 10in	10.00m	38ft 9in	11.80m	45ft 3in	13.80m	51ft 6in	15.7m
A-Platform Height-Elevated	19ft	5.8m	19ft 8in	6.00m	26ft 3in	8.00m	32ft 2in	9.80m	38ft 9in	11.80m	44ft 11in	13.7m
B-Platform Height-Stowed	3ft 5in	1.05m	3ft 6in	1.07m	3ft 11in	1.20m	4ft 4in	1.33m	4ft 10in	1.46m	5ft	1.53m
C-Platform Length	5ft 5in	1.65m	7ft 7in	2.30m	7ft 7in	2.30m	7ft 7in	2.30m	7ft 7in	2.30m	8ft 9in	2.67m
D-Platform Width	2ft 5in	0.74m	2ft 8in	0.81m	2ft 8in	0.81m	3ft 8in	1.12m	3ft 8in	1.12m	3ft 8in	1.12m
Platform Extension	3ft	0.91m	3ft	0.91m	3ft	0.91m	3ft	0.91m	3ft	0.91m	3ft	0.9m
E-Overall Height (Rails Up)	7ft 3in	2.20m	7ft 4in	2.22m	7ft 9in	2.35m	8ft 1in	2.46m	8ft 6in	2.59m	8ft 8in	2.65m
Overall Height (Rails Down)	5ft 10in	1.79m	5ft 8in	1.72m	6ft 1in	1.85m	6ft 4in	1.92m	6ft 9in	2.05m	6ft 11in	2.1m
F-Overall Length	6ft 1in	1.85m	8ft 2in	2.49m	8ft 2in	2.49m	8ft 2in	2.49m	8ft 2in	2.49m	9ft 5in	2.87m
G-Overall Width	2ft 6in	0.76m	2ft 8in	0.81m	2ft 8in	0.81m	3ft 9in	1.15m	3ft 9in	1.15m	4ft 7in	1.4m
H Wheelbase	4ft 6in	1.37m	6ft 1in	1.85m	6ft 1in	1.85m	6ft 1in	1.85m	6ft 1in	1.85m	7ft 3in	2.22m
I-Ground Clearance (Stowed)	2.4in	0.06m	4.5in	0.11m	4.5in	0.11m	4.5in	0.11m	4.5in	0.11m	4.5in	0.11m
J-Ground Clearance (Raised)	0.65in	0.016m	0.75in	0.02m	0.75in	0.02m	0.75in	0.02m	0.75in	0.02m	0.75in	0.02m
Performance												
Platform Capacity	510lb	230kg	840lb	380kg	510lb	230kg	770lb	350kg	770lb	350kg	570lb	260kg
Capacity on Deck Extension	250lb	113kg	250lb	113kg	250lb	113kg	250lb	113kg	250lb	113kg	250lb	113kg
Max. Number of Workers	2		2		2		2		3		2	
Drive Speed (Stowed)	2.2mph	3.5km/h	2.2mph	3.5km/h	2.2mph	3.5km/h	2.2mph	3.5km/h	2.2mph	3.5km/h	2.2mph	3.5km/h
Drive Speed (Raised)	0.5mph	0.8km/h	0.5mph	0.8km/h	0.5mph	0.8km/h	0.5mph	0.8km/h	0.5mph	0.8km/h	0.5mph	0.8km/h
Turning Radius (Inside)	4in	0.1m	4in	0.1m	4in	0.1m	4in	0.1m	4in	0.1m	4in	0.1m
Turning Radius (Outside)	5ft3in	1.6m	6ft11in	2.1m	6ft11in	2.1m	7ft3in	2.2m	7ft3in	2.2m	8ft6in	2.6m
Up/Down Drive Motor	24V/3.3KW		24V/3.3KW		24V/3.3KW		24V/4.5KW		24V/4.5KW		24V/4.5KW	
Up/Down Time	20s/24s		28s/35s		31s/40s		60s/35s		62s/42s		88/60s	
Gradeability	25%(14°)		30%(17°)		25%(14°)		25%(14°)		25%(14°)		25%(14°)	
Max. Working Slope (Lateral/Vertical)	1.5°/3°		1.5°/3°		1.5°/3°		1.5°/3°		1.5°/3°		1.5°/3°	
Control	Proportional Control		Proportional Control		Proportional Control		Proportional Control		Proportional Control		Proportional Control	
Drive	Front Wheels		Front Wheels		Front Wheels		Front Wheels		Front Wheels		Front Wheels	
Brake	Rear Wheels		Rear Wheels		Rear Wheels		Rear Wheels		Rear Wheels		Rear Wheels	
Tire	Ø12in ×4.5in	Ø305mm ×114mm	Ø15in ×5in	Ø381mm ×127mm	Ø15in ×5in	Ø381mm ×127mm	Ø15in ×5in	Ø381mm ×127mm	Ø15in ×5in	Ø381mm ×127mm	Ø15in ×5in	Ø381mm ×127mm
Power												
Battery	4×6V/210Ah		4×6V/225Ah		4×6V/225Ah		4×6V/240Ah		4×12V/300Ah		4×12V/300Ah	
Charger	24V/30A		24V/30A		24V/30A		24V/30A		24V/30A		24V/30A	
Weight												
Gross	3140lb	1425kg	4210lb	1910kg	4540lb	2060kg	6395lb	2900kg	7010lb	3180kg	7805lb	3540kg



ZOOMLION

SCISSOR LIFTS

HD-L SERIES

Comply with CE/ANSI/CSA Standard



HIGHLIGHTS

Cutting-Edge Driving System with Lithium Power

- ▶ 5-year warranty for Li-ion battery
- ▶ Maintenance-free and durable Li-ion battery with triple longer lifetime than traditional
- ▶ Quick-charge technology save time
- ▶ Preheating function built in for cold weather regions
- ▶ Smart Battery Management System (BMS) guarantees safety power.



FEATURES

Standard Features

BMS(Battery Management System)	On-board diagnostic
Proportional controls	Over tilt protective system
All motion alarm	Active pothole protection system
Fold-down handrails	Drivable at full height
Flashing amber beacon	Hour meter
Self-closing entry gate	Extension deck (unidirectional)
Autobrake system	Charging protection system
Emergency descent system	Scissor maintenance prop
Emergency stop button	Forklift pockets
Load sensing system	Maintanance free battery
Horn	

Accessories & Options

- ▶ Platform work lights
- ▶ AC power to platform
- ▶ Air line to platform

ACCESS WITH ZOOMLION GREEN

Phone: 0086(731)-88353680 0086(731)-88250971
E-mail: awm@zoomlion.com

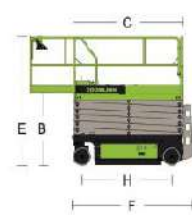
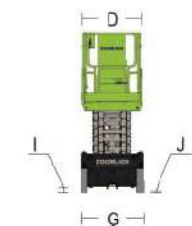
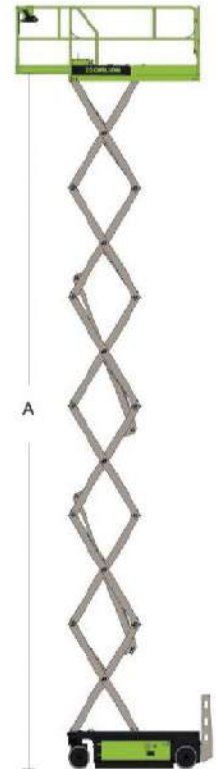
Add: ZOOMLION Wangcheng Industrial Park, Tengfei Road 697, Changsha, Hunan, China
Web: www.en.zoomlion.com

MAIN SPECS OF SCISSOR LIFTS

HD-LI

Comply with CE/ANSI/CSA Standard

Model	ZS0607HD-LI		ZS0608HD-LI		ZS0808HD-LI		ZS1012HD-LI		ZS1212HD-LI		ZS1414HD-LI	
	Imperial	Metric	Imperial	Metric	Imperial	Metric	Imperial	Metric	Imperial	Metric	Imperial	Metric
Size												
Work Height	25ft 7in	7.8m	26ft 3in	8.00m	32ft 10in	10.00m	38ft 9in	11.80m	45ft 3in	13.80m	51ft 6in	15.7m
A-Platform Height-Elevated	19ft	5.8m	19ft 8in	6.00m	26ft 3in	8.00m	32ft 2in	9.80m	38ft 9in	11.80m	44ft 11in	13.7m
B-Platform Height-Stowed	3ft 5in	1.05m	3ft 6in	1.07m	3ft 11in	1.20m	4ft 4in	1.33m	4ft 10in	1.46m	5ft	1.5m
C-Platform Length	5ft 5in	1.65m	7ft 7in	2.30m	7ft 7in	2.30m	7ft 7in	2.30m	7ft 7in	2.30m	8ft 9in	2.67m
D-Platform Width	2ft 5in	0.74m	2ft 8in	0.81m	2ft 8in	0.81m	3ft 8in	1.12m	3ft 8in	1.12m	3ft 8in	1.12m
Platform Extension	3ft	0.91m	3ft	0.91m	3ft	0.91m	3ft	0.91m	3ft	0.91m	3ft	0.9m
E-Overall Height (Rails Up)	7ft 3in	2.20m	7ft 4in	2.22m	7ft 9in	2.35m	8ft 1in	2.46m	8ft 6in	2.59m	8ft 8in	2.65m
Overall Height (Rails Down)	5ft 10in	1.79m	5ft 8in	1.72m	6ft 1in	1.85m	6ft 4in	1.92m	6ft 9in	2.05m	6ft 11in	2.1m
F-Overall Length	6ft 1in	1.85m	8ft 2in	2.49m	8ft 2in	2.49m	8ft 2in	2.49m	8ft 2in	2.49m	9ft 5in	2.87m
G-Overall Width	2ft 6in	0.76m	2ft 8in	0.81m	2ft 8in	0.81m	3ft 9in	1.15m	3ft 9in	1.15m	4ft 7in	1.4m
H Wheelbase	4ft 6in	1.37m	6ft 1in	1.85m	6ft 1in	1.85m	6ft 1in	1.85m	6ft 1in	1.85m	7ft 3in	2.22m
I-Ground Clearance (Stowed)	2.4in	0.06m	4.5in	0.11m	4.5in	0.11m	4.5in	0.11m	4.5in	0.11m	4.5in	0.11m
J-Ground Clearance (Raised)	0.65in	0.016m	0.75in	0.02m	0.75in	0.02m	0.75in	0.02m	0.75in	0.02m	0.75in	0.02m
Performance												
Platform Capacity	510lb	230kg	840lb	380kg	510lb	230kg	770lb	350kg	770lb	350kg	570lb	260kg
Capacity on Deck Extension	250lb	113kg	250lb	113kg	250lb	113kg	250lb	113kg	250lb	113kg	250lb	113kg
Max. Number of Workers	2		2		2		2		3		2	
Drive Speed (Stowed)	2.2mph	3.5km/h	2.2mph	3.5km/h	2.2mph	3.5km/h	2.2mph	3.5km/h	2.2mph	3.5km/h	2.2mph	3.5km/h
Drive Speed (Raised)	0.5mph	0.8km/h	0.5mph	0.8km/h	0.5mph	0.8km/h	0.5mph	0.8km/h	0.5mph	0.8km/h	0.5mph	0.8km/h
Turning Radius (Inside)	4in	0.1m	4in	0.1m	4in	0.1m	4in	0.1m	4in	0.1m	4in	0.1m
Turning Radius (Outside)	5ft 3in	1.6m	6ft 11in	2.1m	6ft 11in	2.1m	7ft 3in	2.2m	7ft 3in	2.2m	8ft 6in	2.6m
Up/Down Drive Motor	24V/3.3KW		24V/3.3KW		24V/3.3KW		24V/4.5KW		24V/4.5KW		24V/4.5KW	
Up/Down Time	20s/24s		28s/35s		31s/40s		60s/35s		62s/42s		88s/60s	
Gradeability	25%(14°)		30%(17°)		25%(14°)		25%(14°)		25%(14°)		25%(14°)	
Max. Working Slope (Lateral/Vertical)	1.5°/3°		1.5°/3°		1.5°/3°		1.5°/3°		1.5°/3°		1.5°/3°	
Control	Proportional Control		Proportional Control		Proportional Control		Proportional Control		Proportional Control		Proportional Control	
Drive	Front Wheels		Front Wheels		Front Wheels		Front Wheels		Front Wheels		Front Wheels	
Brake	Rear Wheels		Rear Wheels		Rear Wheels		Rear Wheels		Rear Wheels		Rear Wheels	
Tire	Ø12in x4.5in	Ø305mm x114mm	Ø15in x5in	Ø381mm x127mm	Ø15in x5in	Ø381mm x127mm	Ø15in x5in	Ø381mm x127mm	Ø15in x5in	Ø381mm x127mm	Ø15in x5in	Ø381mm x127mm
Power												
Battery	140Ah Li-ion		180Ah Li-ion		180Ah Li-ion		200Ah Li-ion		200Ah Li-ion		250Ah Li-ion	
Charger	24V/30A		24V/30A		24V/30A		24V/30A		24V/30A		24V/30A	
Charger (Option)			24V/60A		24V/60A		24V/60A		24V/60A		24V/60A	
Weight												
Gross	3140lb	1425kg	4210lb	1910kg	4540lb	2060kg	6395lb	2900kg	7010lb	3180kg	7805lb	3540kg



ZOOMLION SCISSOR LIFTS

DC SERIES

Comply with CE/ANSI/CSA Standard

HIGHLIGHTS

High Performance

- ▶ Efficient electric direct drive system
- ▶ Greater platform capacity with better performance on-the-job
- ▶ Front-wheel drive and brake offer mobility and versatility

Easy Maintenance & Service

- ▶ Common components and modular design, easy to maintenance
- ▶ Bilateral swing-out trays (battery & hydraulic), simple to service
- ▶ Robust & build to last, reliable and safe

FEATURES

Standard Features

Proportional controls	Drivable at full height
All motion alarm	Scissor maintenance prop
Fold-down handrails	Charging protection system
Flashing amber beacon	Extension deck (unidirectional)
Self-closing entry gate	Autobrake system
Emergency descent system	On-board diagnostic
Active pothole protection system	Emergency stop button
Hour meter	Over tilt protective system
Forklift pockets	Load sensing system
Horn	

Accessories & Options

- ▶ Air line to platform
- ▶ AC power to platform
- ▶ Platform work lights



ACCESS WITH ZOOMLION GREEN

Phone: 0086(731)-88353680 0086(731)-88250971
E-mail: awm@zoomlion.com

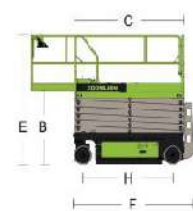
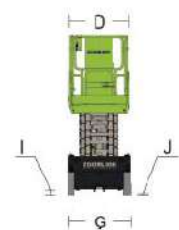
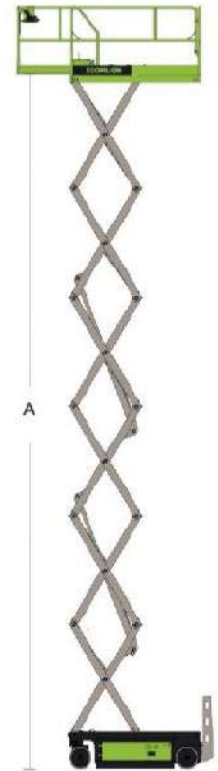
Add: ZOOMLION Wangcheng Industrial Park, Tengfei Road 997, Changsha, Hunan, China
Web: www.en.zoomlion.com

MAIN SPECS OF SCISSOR LIFTS

DC SERIES

Comply with CE/ANSI/CSA Standard

Model	ZS0607DC		ZS0608DC		ZS0808DC		ZS1012DC		ZS1212DC		ZS1414DC	
	Imperial	Metric	Imperial	Metric	Imperial	Metric	Imperial	Metric	Imperial	Metric	Imperial	Metric
Size												
Work Height	25ft 7in	7.8m	26ft 3in	8.00m	32ft 10in	10.00m	38ft 9in	11.80m	45ft 3in	13.80m	51ft 6in	15.7m
A-Platform Height-Elevated	19ft	5.8m	19ft 8in	6.00m	26ft 3in	8.00m	32ft 2in	9.80m	38ft 9in	11.80m	44ft 11in	13.7m
B-Platform Height-Stowed	3ft 5in	1.05m	3ft 6in	1.07m	3ft 11in	1.20m	4ft 4in	1.33m	4ft 10in	1.46m	5ft	1.53m
C-Platform Length	5ft 5in	1.65m	7ft 7in	2.30m	7ft 7in	2.30m	7ft 7in	2.30m	7ft 7in	2.30m	8ft 9in	2.67m
D-Platform Width	2ft 5in	0.74m	2ft 8in	0.81m	2ft 8in	0.81m	3ft 8in	1.12m	3ft 8in	1.12m	3ft 8in	1.12m
Platform Extension	3ft	0.91m	3ft	0.91m	3ft	0.91m	3ft	0.91m	3ft	0.91m	3ft	0.9m
E-Overall Height (Rails Up)	7ft 3in	2.20m	7ft 4in	2.22m	7ft 9in	2.35m	8ft 1in	2.46m	8ft 6in	2.59m	8ft 8in	2.65m
Overall Height (Rails Down)	5ft 10in	1.79m	5ft 8in	1.72m	6ft 1in	1.85m	6ft 4in	1.92m	6ft 9in	2.05m	6ft 11in	2.1m
F-Overall Length	6ft 1in	1.85m	8ft 2in	2.49m	8ft 2in	2.49m	8ft 2in	2.49m	8ft 2in	2.49m	9ft 5in	2.87m
G-Overall Width	2ft 6in	0.76m	2ft 8in	0.81m	2ft 8in	0.81m	3ft 9in	1.15m	3ft 9in	1.15m	4ft 7in	1.4m
H Wheelbase	4ft 6in	1.37m	6ft 1in	1.85m	6ft 1in	1.85m	6ft 1in	1.85m	6ft 1in	1.85m	7ft 3in	2.22m
I-Ground Clearance (Stowed)	2.4in	0.06m	4.5in	0.11m	4.5in	0.11m	4.5in	0.11m	4.5in	0.11m	4.5in	0.11m
J-Ground Clearance (Raised)	0.65in	0.016m	0.75in	0.02m	0.75in	0.02m	0.75in	0.02m	0.75in	0.02m	0.75in	0.02m
Performance												
Platform Capacity	510lb	230kg	840lb	380kg	510lb	230kg	770lb	350kg	770lb	350kg	570lb	260kg
Capacity on Deck Extension	250lb	113kg	250lb	113kg	250lb	113kg	250lb	113kg	250lb	113kg	250lb	113kg
Max. Number of Workers	2		2		2		2		3		2	
Drive Speed (Stowed)	2.5mph	4km/h	2.5mph	4km/h	2.5mph	4km/h	2.5mph	4km/h	2.5mph	4km/h	2.5mph	4km/h
Drive Speed (Raised)	0.5mph	0.8km/h	0.5mph	0.8km/h	0.5mph	0.8km/h	0.5mph	0.8km/h	0.5mph	0.8km/h	0.5mph	0.8km/h
Turning Radius (Inside)	4in	0.1m	4in	0.1m	4in	0.1m	4in	0.1m	4in	0.1m	4in	0.1m
Turning Radius (Outside)	5ft3in	1.6m	6ft11in	2.1m	6ft11in	2.1m	7ft3in	2.2m	7ft3in	2.2m	8ft6in	2.6m
Lifting Motor	24V/3.3KW		24V/3.3KW		24V/3.3KW		24V/4.5KW		24V/4.5KW		24V/4.5KW	
Drive Motor	24V/2×0.65KW		24V/2×0.75KW		24V/2×0.75KW		24V/12×0.75KW		24V/2×0.75KW		24V/2×0.75KW	
Up/Down Time	20s/24s		28s/35s		31s/40s		60s/35s		62s/42s		88/60s	
Gradeability	25%(14°)		30%(17°)		25%(14°)		25%(14°)		25%(14°)		25%(14°)	
Max. Working Slope (Lateral/Vertical)	1.5°/3°		1.5°/3°		1.5°/3°		1.5°/3°		1.5°/3°		1.5°/3°	
Control	Proportional Control		Proportional Control		Proportional Control		Proportional Control		Proportional Control		Proportional Control	
Drive	Front Wheels		Front Wheels		Front Wheels		Front Wheels		Front Wheels		Front Wheels	
Brake	Front Wheels		Front Wheels		Front Wheels		Front Wheels		Front Wheels		Front Wheels	
Tire	Ø13in ×4in	Ø323mm ×100mm	Ø15in ×5in	Ø381mm ×127mm	Ø15in ×5in	Ø381mm ×127mm	Ø15in ×5in	Ø381mm ×127mm	Ø15in ×5in	Ø381mm ×127mm	Ø15in ×5in	Ø381mm ×127mm
Power												
Battery	4×6V/210Ah		4×6V/225Ah		4×6V/225Ah		4×6V/240Ah		4×12V/300Ah		4×12V/300Ah	
Charger	24V/30A		24V/30A		24V/30A		24V/30A		24V/30A		24V/30A	
Weight												
Gross	3210lb	1455kg	4280lb	1940kg	4610lb	2090kg	6460lb	2930kg	7075lb	3210kg	7870lb	3570kg



ZOOMLION

SCISSOR LIFTS

DC-L² SERIES

Comply with CE/ANSI/CSA Standard

HIGHLIGHTS

Cutting-Edge Driving System with Lithium Power

- ▶ 5-year warranty for Li-ion battery
- ▶ Maintenance-free and durable Li-ion battery with triple longer lifetime than traditional
- ▶ Quick-charge technology save time
- ▶ Preheating function built in for cold weather regions
- ▶ Smart Battery Management System (BMS) guarantees safety power.

FEATURES

Standard Features

BMS(Battery Management System)	On-board diagnostic
Proportional controls	Over tilt protective system
All motion alarm	Active pothole protection system
Fold-down handrails	Drivable at full height
Flashing amber beacon	Hour meter
Self-closing entry gate	Extension deck (unidirectional)
Autobrake system	Charging protection system
Emergency descent system	Scissor maintenance prop
Emergency stop button	Forklift pockets
Load sensing system	Maintenance free battery
Horn	

Accessories & Options

- ▶ Platform work lights
- ▶ AC power to platform
- ▶ Air line to platform



ACCESS WITH ZOOMLION GREEN

Phone: 0086(731)-88353680 0086(731)-88250971
E-mail: awm@zoomlion.com

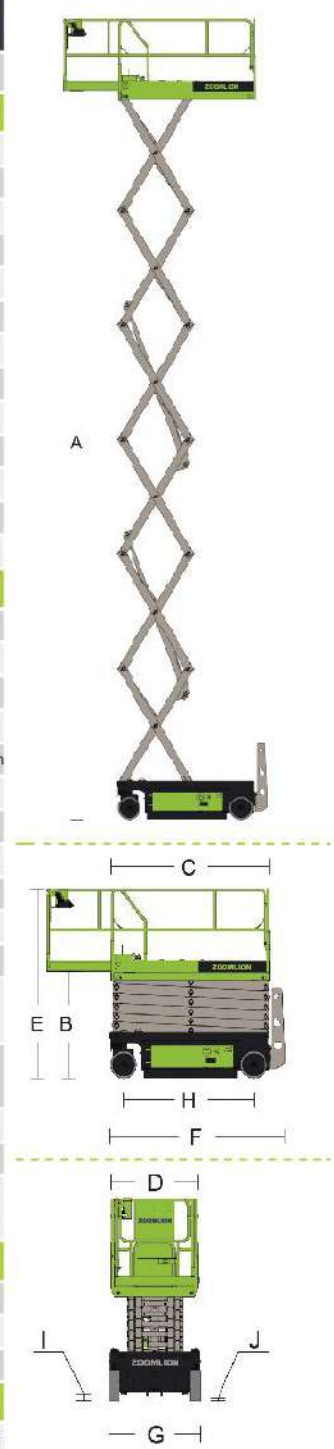
Add: ZOOMLION Wangcheng Industrial Park, Tengfei Road 697, Changsha, Hunan, China
Web: www.en.zoomlion.com

MAIN SPECS OF SCISSOR LIFTS

DC-LI

Comply with CE/ANSI/CSA Standard

Model	ZS0607DC-LI		ZS0608DC-LI		ZS0808DC-LI		ZS1012DC-LI		ZS1212DC-LI		ZS1414DC-LI	
	Imperial	Metric	Imperial	Metric	Imperial	Metric	Imperial	Metric	Imperial	Metric	Imperial	Metric
Size												
Work Height	25ft 7in	7.8m	26ft 3in	8.00m	32ft 10in	10.00m	38ft 9in	11.80m	45ft 3in	13.80m	51ft 6in	15.7m
A-Platform Height-Elevated	19ft	5.8m	19ft 8in	6.00m	26ft 3in	8.00m	32ft 2in	9.80m	38ft 9in	11.80m	44ft 11in	13.7m
B-Platform Height-Stowed	3ft 5in	1.05m	3ft 6in	1.07m	3ft 11in	1.20m	4ft 4in	1.33m	4ft 10in	1.46m	5ft	1.53m
C-Platform Length	5ft 5in	1.65m	7ft 7in	2.30m	7ft 7in	2.30m	7ft 7in	2.30m	7ft 7in	2.30m	8ft 9in	2.67m
D-Platform Width	2ft 5in	0.74m	2ft 8in	0.81m	2ft 8in	0.81m	3ft 8in	1.12m	3ft 8in	1.12m	3ft 8in	1.12m
Platform Extension	3ft	0.91m	3ft	0.91m	3ft	0.91m	3ft	0.91m	3ft	0.91m	3ft	0.9m
E-Overall Height (Rails Up)	7ft 3in	2.20m	7ft 4in	2.22m	7ft 9in	2.35m	8ft 1in	2.46m	8ft 6in	2.59m	8ft 8in	2.65m
Overall Height (Rails Down)	5ft 10in	1.79m	5ft 8in	1.72m	6ft 1in	1.85m	6ft 4in	1.92m	6ft 9in	2.05m	6ft 11in	2.1m
F-Overall Length	6ft 1in	1.85m	8ft 2in	2.49m	8ft 2in	2.49m	8ft 2in	2.49m	8ft 2in	2.49m	9ft 5in	2.87m
G-Overall Width	2ft 6in	0.76m	2ft 8in	0.81m	2ft 8in	0.81m	3ft 9in	1.15m	3ft 9in	1.15m	4ft 7in	1.4m
H Wheelbase	4ft 6in	1.37m	6ft 1in	1.85m	6ft 1in	1.85m	6ft 1in	1.85m	6ft 1in	1.85m	7ft 3in	2.22m
I-Ground Clearance (Stowed)	2.4in	0.06m	4.5in	0.11m	4.5in	0.11m	4.5in	0.11m	4.5in	0.11m	4.5in	0.11m
J-Ground Clearance (Raised)	0.65in	0.016m	0.75in	0.02m	0.75in	0.02m	0.75in	0.02m	0.75in	0.02m	0.75in	0.02m
Performance												
Platform Capacity	510lb	230kg	840lb	380kg	510lb	230kg	770lb	350kg	770lb	350kg	570lb	260kg
Capacity on Deck Extension	250lb	113kg	250lb	113kg	250lb	113kg	250lb	113kg	250lb	113kg	250lb	113kg
Max. Number of Workers	2		2		2		2		3		2	
Drive Speed (Stowed)	2.5mph	4km/h	2.5mph	4km/h	2.5mph	4km/h	2.5mph	4km/h	2.5mph	4km/h	2.5mph	4km/h
Drive Speed (Raised)	0.5mph	0.8km/h	0.5mph	0.8km/h	0.5mph	0.8km/h	0.5mph	0.8km/h	0.5mph	0.8km/h	0.5mph	0.8km/h
Turning Radius (Inside)	4in	0.1m	4in	0.1m	4in	0.1m	4in	0.1m	4in	0.1m	4in	0.1m
Turning Radius (Outside)	5ft 3in	1.6m	6ft 11in	2.1m	6ft 11in	2.1m	7ft 3in	2.2m	7ft 3in	2.2m	8ft 6in	2.6m
Lifting Motor	24V/3.3KW		24V/3.3KW		24V/3.3KW		24V/4.5KW		24V/4.5KW		24V/4.5KW	
Drive Motor	24V/2x0.65KW		24V/2x0.75KW		24V/2x0.75KW		24V/2x0.75KW		24V/2x0.75KW		24V/2x0.75KW	
Up/Down Time	20s/24s		28s/35s		31s/40s		60s/35s		62s/42s		88/60s	
Gradeability	25%(14°)		30%(17°)		25%(14°)		25%(14°)		25%(14°)		25%(14°)	
Max. Working Slope (Lateral/Vertical)	1.5°/3°		1.5°/3°		1.5°/3°		1.5°/3°		1.5°/3°		1.5°/3°	
Control	Proportional Control		Proportional Control		Proportional Control		Proportional Control		Proportional Control		Proportional Control	
Drive	Front Wheels		Front Wheels		Front Wheels		Front Wheels		Front Wheels		Front Wheels	
Brake	Front Wheels		Front Wheels		Front Wheels		Front Wheels		Front Wheels		Front Wheels	
Tire	Ø13in x4in	Ø323mm x100mm	Ø15in x5in	Ø381mm x127mm	Ø15in x5in	Ø381mm x127mm	Ø15in x5in	Ø381mm x127mm	Ø15in x5in	Ø381mm x127mm	Ø15in x5in	Ø381mm x127mm
Power												
Battery	140Ah Li-ion		180Ah Li-ion		180Ah Li-ion		200Ah Li-ion		200Ah Li-ion		250Ah Li-ion	
Charger	24V/30A		24V/30A		24V/30A		24V/30A		24V/30A		24V/30A	
Charger (Option)			24V/60A		24V/60A		24V/60A		24V/60A		24V/60A	
Weight												
Gross	3210lb	1455kg	4280lb	1940kg	4610lb	2090kg	6460lb	2930kg	7075lb	3210kg	7870lb	3570kg



ZOOMLION SCISSOR LIFTS ROUGH TERRAIN

Comply with CE Standard



HIGHLIGHTS

- ▶ Reliable auto-leveling function
- ▶ 1500lb/680kg platform capacity
- ▶ 4ft 3in/1.3m platform extension
- ▶ Bilateral swing-out trays, simple to service and effective to control noise
- ▶ Smart telematic control interface with self-diagnostic monitoring capability



FEATURES

Standard Features

Proportional controls	On-board diagnostic
All motion alarm	Over tilt protective system
Fold-down handrails	Horn
Flashing amber beacon	Hour meter
Self-closing entry gate	Extension deck (bidirectional)
Autobrake system	Scissor maintenance prop
Emergency descent system	Load sensing system
Emergency stop button	

Accessories & Options

- ▶ Platform work lights
- ▶ AC power to platform
- ▶ Air line to platform



ACCESS WITH ZOOMLION GREEN

Phone: 0086(731)-88353680 0086(731)-88250971
E-mail: awm@zoomlion.com

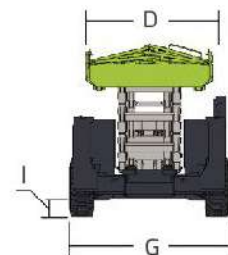
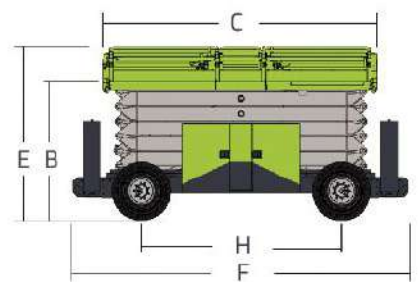
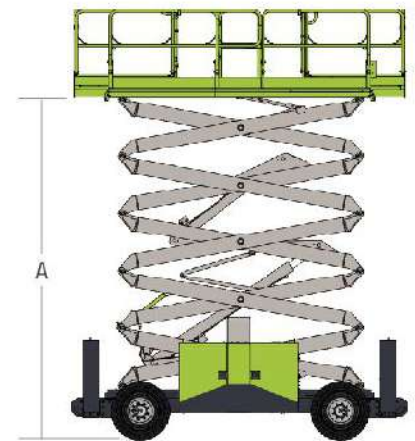
Add: ZOOMLION Wangcheng Industrial Park, Tengfei Road 997, Changsha, Hunan, China
Web: www.en.zoomlion.com

ZOOMLION

MAIN SPECS OF SCISSOR LIFTS ROUGH TERRAIN

Comply with CE Standard

Model	ZS1623RT	
	Imperial	Metric
Size		
Work Height	59ft	18m
A Platform Height-Elevated	52ft 6in	16m
B Platform Height-Stowed	6ft 8in	2.03m
C Platform Dimension (Length)	13ft 1in	3.98m
D Platform Dimension (Width)	6ft	1.83m
Platform Extension	4ft 3in	1.3m
Overall Height (Rails Up)	10ft 4in	3.16m
E Overall Height (Rails Down)	8ft 1in	2.47m
F Overall Length	16ft	4.88m
G Overall Width	7ft 7in	2.3m
H Wheelbase	9ft 6in	2.9m
I Ground Clearance	11in	0.275m
Performance		
Platform Capacity	1500lb	680kg
Capacity on Deck Extension	510lb	230kg
Drive Height	29ft 6in	9m
Max. Number of Workers	4	
Drive Speed (Stowed)	4mph	6.5km/h
Drive Speed (Raised)	0.3mph	0.5km/h
Turning Radius (Inside)	9ft	2.75m
Turning Radius (Outside)	19ft	5.8m
Up/Down Time	60/65s	
Gradeability	40%	
Max. Working Slope (Lateral/Vertical)	2°/3°	
Drive	4WD	
Brake	315/55 D20 Foam-filled Tires	
Power		
Engine	Kubota v2403-M-DI	
Engine Power	36kw/2600rpm	
Fuel Tank Capacity	27.7 (us gal)	105L
Diesel Tank	26.4 (us gal)	100L
Weight		
Gross	19070lb	8650kg



ZOOMLION

ELECTRIC ARTICULATING BOOM LIFTS

ZA14JE/ZA20JE

Comply with CE/ANSI/CSA Standard



HIGHLIGHTS

- ▶ Provide greater work height of 70ft 4in/21.45m and lift capacity of 550lb/250kg than competitor. (ZA20JE Only)
- ▶ Fast lift system directly lowers the boom from the highest position to the ground, no need to fold the boom to improve work efficiency. (ZA20JE Only)
- ▶ Accurate and efficient traveling AC drive system and on-board motion AC drive system provides strong power, stable control and maintenance-free motor.
- ▶ Center layout, great structural rigidity, and small boom deflection
- ▶ Advanced dual control system (valve control + pump control) offers a energy-saving, smooth and efficient control.
- ▶ Accurate and efficient traveling AC drive system provides strong power and stable control
- ▶ 52ft 6in/16m working height

FEATURES

Standard Features

Proportional control	On-board diagnostic system
All motion alarm	Over tilt protection system
Flashing amber beacon	Oscillating axle (ZA20JE)
Self-closing entry gate	Load sensing system
Emergency descent system	4.3' LED display
Emergency stop button	Horn
Auto-leveling system	

Accessories & Options

- ▶ AC power to platform
- ▶ Air line to platform
- ▶ 8.01ftx2.99ft work platform(ZA20JE)
- ▶ Non-marking tire

ACCESS WITH ZOOMLION GREEN

Phone: 0086(731)-88353680.0086(731)-88250971
E-mail: awm@zoomlion.com

Add: ZOOMLION Wangcheng Industrial Park, Tengfei Road 997, Changsha, Hunan, China
Web: www.en.zoomlion.com

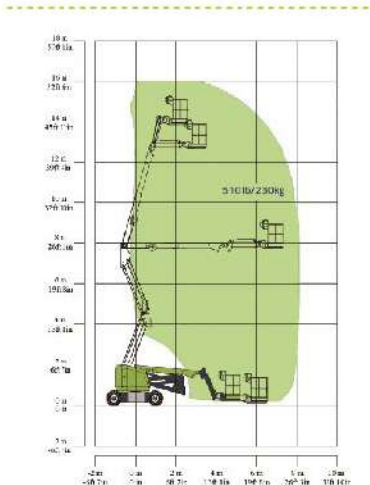
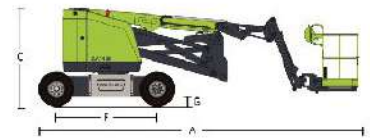
ZOOMLION

ELECTRIC ARTICULATING BOOM LIFTS

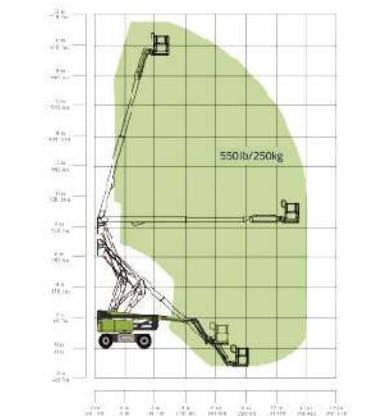
ZA14JE/ZA20JE

Comply with CE/ANSI/CSA Standard

Model	ZA14JE		ZA20JE	
	Imperial	Metric	Imperial	Metric
Size				
Work Height	52ft 6in	16m	70ft 4in	21.45m
Platform Height	45ft 11in	14m	63ft 10in	19.45m
Horizontal Outreach	24ft 7in	7.50m	39ft 6in	12.05m
Up and Over Height	25ft 5in	7.74m	27ft 1in	8.25m
A - Stowed Length	21ft 8in	6.6m	28ft 7in	8.72m
B - Stowed Width	5ft 9in	1.75m	8ft 2in	2.49m
C - Stowed Height	6ft 7in	2m	8ft 3in	2.56m
D - Platform Length	4ft 12in	1.52m	6.00ft(standard) 8.01ft(option)	1.83m(standard) 2.44 (option)
E - Platform Width	2ft 6in	0.76m	2.49ft(standard) 2.99ft(option)	0.76m(standard) 0.91(option)
F - Wheelbase	6ft 9in	2.05m	8ft 3in	2.52m
G - Ground Clearance	8in	0.20m	1ft 1in	0.33m
Performance				
Platform Capacity	510 lb	230kg	550 lb	250kg
Drive Speed	3.79 mph	6.1km/h	3.79 mph	6.1km/h
Gradeability	30%(17°)		45%(24°)	
Axles Oscillation	/	/	8in	0.20m
Turning Radius (Inside)	2ft 7in	0.79m	9ft 1in	2.78m
Turning Radius (Outside)	10ft 4in	3.15m	18ft	5.49m
Swing	360° continuous		360° continuous	
Platform Rotation	±90°		±90°	
H-Tail Swing	0in	0m	2ft	0.6m
Max. Working Slope	2/4°		3/5°	
Max. Wind Speed	27.96mph	12.5m/s	27.96mph	12.5m/s
Power				
Battery	24×2V/320Ah		24×2V/440Ah	
Charger	48V/60A		48V/60A	
Drive Motor	AC 32V	AC 32V	AC 32V	AC 32V
Lift Motor	DC 48V	DC 48V	AC 32V	AC 32V
Auxiliary Power	Manual Pump		12V DC	
Hydraulic Tank Capacity	7.9 (us gal)	30L	19.8 (us gal)	75L
Drive	2WD		4WD	
Tire				
Type	240/55D17.5 Foam-filled Tires		33×12 D610 Foam-filled Tires	
Weight				
Gross	14991 lb	6800kg	20283 lb	9200kg



Range of Motion ZA14JE



Range of Motion ZA20JE

ZOOMLION ARTICULATING BOOM LIFTS

ZA14J/ZA18J

Comply with CE/ANSI/CSA Standard

HIGHLIGHTS



▶ 660lb/300kg platform capacity for higher efficiency (ZA14J Only)

▶ Build-in multiple pressure control leveling system to enhance stability

▶ Precise load sensing system to improve overload safety operations

▶ Integrated with rotary reducer to enhance rotation stability

▶ Hostile Kits available for dusty working environment

▶ Deadweight Lowering System for smooth operation and energy efficiency

▶ 51ft 10in/15.80m working height

FEATURES

Standard Features

Horn
All motion alarm
Proportional control
Self-closing entry gate
Flashing amber beacon
Auto-leveling system
Emergency stop button
Over tilt protection system
Emergency descent system
On-board diagnostic system
Oscillating axle
4.3' LED display
Load sensing system
Swing-out engine tray

Accessories & Options

- ▶ Platform work lights
- ▶ Anti-collision device
- ▶ AC power to platform

ACCESS WITH ZOOMLION GREEN

Phone: 0086(731)-88353680 0086(731)-88250971
E-mail: awm@zoomlion.com

Add: ZOOMLION Wangcheng Industrial Park, Tengfei Road 997, Changsha, Hunan, China
Web: www.en.zoomlion.com

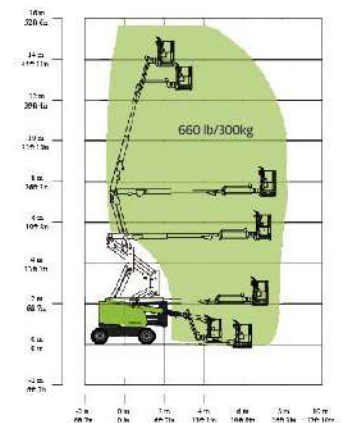
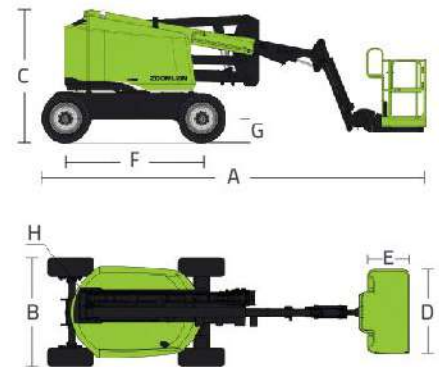
ZOOMLION

MAIN SPECS OF ARTICULATING BOOM LIFTS

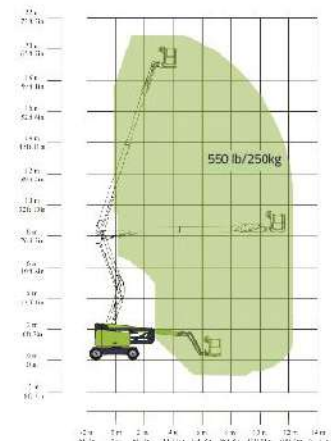
ZA14J/ZA18J

Comply with CE/ANSI/CSA Standard

Model	ZA14J		ZA18J	
	Imperial	Metric	Imperial	Metric
Size				
Work Height	51ft 10in	15.80m	68ft 8in	20.93m
Platform Height	45ft 3in	13.80m	62ft 1in	18.93m
Horizontal Outreach	27ft 3in	8.30m	40ft 6in	12.35m
Up and Over Height	24ft 9in	7.55m	27ft 3in	8.3m
A - Stowed Length	21ft 7in	6.57m	29ft 11in	9.12m
B - Stowed Width	7ft 7in	2.30m	8ft 2in	2.49m
C - Stowed Height	7ft 5in	2.27m	8ft 6in	2.58m
D - Platform Length	6ft	1.83m	8/6ft	2.44/1.83m
E - Platform Width	2ft 6in	0.76m	3ft/2ft 6in	0.91/0.76m
F - Wheelbase	7ft 9in	2.36m	8ft 3in	2.52m
G - Ground Clearance	1ft 5in	0.42m	1ft 5in	0.42m
Performance				
Platform Capacity	660 lb	300kg	550 lb	250kg
Drive Speed	4.23 mph	6.8km/h	3.79 mph	6.1km/h
Gradeability	45%(24°)	45%(24°)	45%(24°)	45%(24°)
Axles Oscillation	4in	0.1m	8in	0.2m
Turning Radius (Inside)	6ft 9in	2.06m	8ft 3in	2.51m
Turning Radius (Outside)	15ft 8in	4.78m	17ft 11in	5.47m
Swing	355°		360° continuous	
Platform Rotation	±90°		±90°	
H-Tail Swing	0		0	
Max. Working Slope	5°		5°	
Max. Wind Speed	27.96mph	12.5m/s	27.96mph	12.5m/s
Power				
Diesel Engine	Kubota V2403 Deutz D2.9L4		Kubota V2403	
Engine Power	48.3hp/2600rpm	36kw/2600rpm	48.3hp/2600rpm	36kw/2600rpm
Fuel Tank Capacity	17.2 (us gal)	65L	39.6 (us gal)	150L
Auxiliary Power	12V		12V	
Control Voltage	12V		12V	
Hydraulic System Capacity	39.6 (us gal)	150L	42.3 (us gal)	160L
Hydraulic Tank Capacity	20.1 (us gal)	76L	19.8 (us gal)	75L
Drive	4WD		4WD	
Tire				
Type	315/55 D20 Foam-filled Tires		355/55 D625 Foam-filled Tires	
Weight				
Gross	15653 lb	7100kg	24251 lb	11000kg



Range of Motion ZA14J



Range of Motion ZA18J

ZOOMLION TELESCOPIC BOOM LIFTS

ZT20J/ZT26J

Comply with CE/ANSI/CSA Standard

HIGHLIGHTS

- ▶ Platform dual capacity design, up to 660/1000lb (300/454kg)
- ▶ Smart telematic control interface with self-diagnostic monitoring capability
- ▶ Better work envelop performance, 10% larger than competitor
- ▶ 74ft 7in/22.75m working heights
- ▶ Smooth & stable boom extension technique controls the minimum stable extending speed at 0.015mph (0.034m/s)



FEATURES

Standard Features

Horn
All motion alarm
Proportional control
Self-closing entry gate
Flashing amber beacon
Auto-leveling system
Emergency stop button
Over tilt protection system
Emergency descent system
On-board diagnostic system
Oscillating axle
4.3' LED display
Load sensing system
Swing-out engine tray

Accessories & Options

- ▶ Platform work lights
- ▶ Anti-collision device
- ▶ AC power to platform

ACCESS WITH ZOOMLION GREEN

Phone: 0086(731)-88353680 0086(731)-88250971
E-mail: awm@zoomlion.com

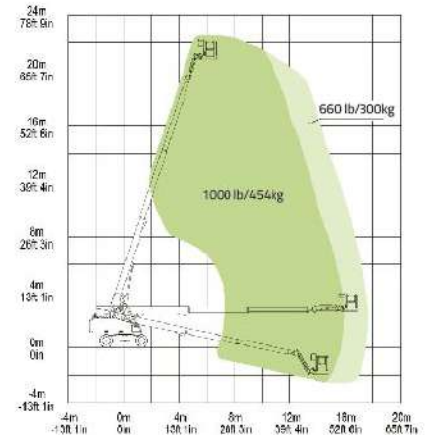
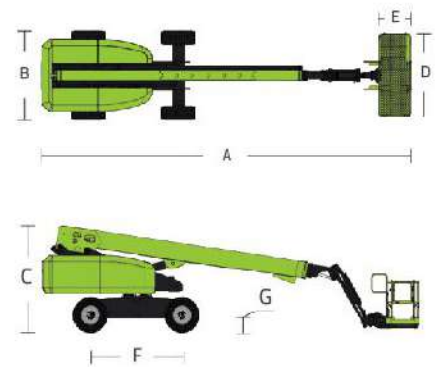
Add: ZOOMLION Wangcheng Industrial Park, Tengfei Road 997, Changsha, Hunan, China
Web: www.en.zoomlion.com

MAIN SPECS OF TELESCOPIC BOOM LIFTS

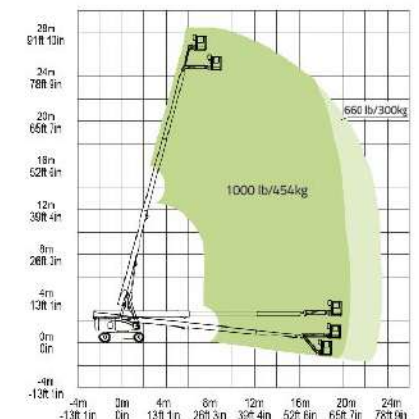
ZT20J/ZT26J

Comply with CE/ANSI/CSA Standard

Model	ZT20J		ZT26J	
	Imperial	Metric	Imperial	Metric
Size				
Work Height	74ft 7in	22.75m	92ft 6in	28.20m
Platform Height	68ft 1in	20.75m	85ft 11in	26.20m
Horizontal Outreach	57ft 1in	17.4m	76ft 6in	23.31m
A - Stowed Length	34ft	10.36m	41ft	12.50m
B - Stowed Width	8ft 2in	2.49m	8ft 2in	2.49m
C - Stowed Height	9ft 1in	2.78m	9ft 2in	2.80m
D - Platform Length	8ft	2.44m	8ft	2.44m
E - Platform Width	3ft	0.91m	3ft	0.91m
F - Wheelbase	8ft 3in	2.52m	10ft	3.05m
G - Ground Clearance	1ft 5in	0.42m	1ft 4in	0.40m
Performance				
Platform Capacity (Unrestricted/Restricted)	660/1000lb	300/454kg	660/1000lb	300/454kg
Drive Speed (Stowed)	3.73mph	6.0km/h	3.42mph	5.5km/h
Gradeability	45%(24°)	45%(24°)	45%(24°)	45%(24°)
Turning Radius (Inside)	7ft 10in	2.4m	12ft	3.66m
Turning Radius (Outside)	17ft 9in	5.4m	22ft 6in	6.86m
Turntable Swing	360° continuous		360° continuous	
Platform Rotation	±90°		±90°	
Tail Swing	4ft 9in	1.45m	5ft 3in	1.60m
Lib (Range of Articulation)	130°(-55°~75°)		135°(-60°~75°)	
Max. Working Slope	3°		3°	
Max. Wind Speed	28mph	12.5m/s	28mph	12.5m/s
Power				
Engine	Deutz D2.9 L4 Kubota V2403		Cummins QSF2.8 Deutz TD2.9 L4 / Kubota V2607	
Fuel Tank Capacity	39.6 (us gal)	150L	39.6 (us gal)	150L
Control Voltage	12V DC		12V DC	
Hydraulic Tank Capacity	39.6 (us gal)	150L	39.6 (us gal)	150L
Drive Mode	4WD		4WD	
Steering Mode	Front-wheel		Front-wheel	
Tire				
Type	355/55D-625 Foam-filled Tires		15-625 Foam-filled Tires	
Weight				
Gross	27337lb	12400kg	41667lb	18900kg



Range of Motion ZT20J



Range of Motion ZT26J

ZOOMLION TELESCOPIC BOOM LIFTS ZT34J/ZT38J

Comply with CE Standard



HIGHLIGHTS

- ▶ Platform dual capacity design, up to 660/1000lb(300/454kg)
- ▶ Smart telematic control interface with self-diagnostic monitoring capability
- ▶ Better work envelop performance, 10% larger than competitor
- ▶ 118ft 1in/36m working heights
- ▶ Smooth & stable boom extension technique controls the minimum stable extending speed at 0.015mph (0.034m/s)

FEATURES

Standard Features

Horn
All motion alarm
Proportional control
Self-closing entry gate
Flashing amber beacon
Auto-leveling system
Emergency stop button
Over tilt protection system
Emergency descent system
On-board diagnostic system
Oscillating axle
4.3' LED display
Load sensing system
Swing-out engine tray

Accessories & Options

- ▶ Platform work lights
- ▶ Anti-collision device
- ▶ AC power to platform
- ▶ Axle extending function

ACCESS WITH ZOOMLION GREEN

Phone: 0086(731)-88353680 0086(731)-88250971
E-mail: awm@zoomlion.com

Add: ZOOMLION Wangcheng Industrial Park, Tengfei Road 997, Changsha, Hunan, China
Web: www.en.zoomlion.com

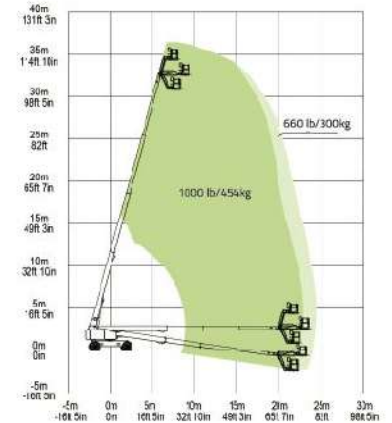
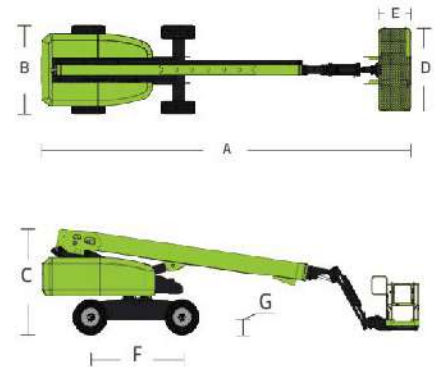
ZOOMLION

MAIN SPECS OF TELESCOPIC BOOM LIFTS

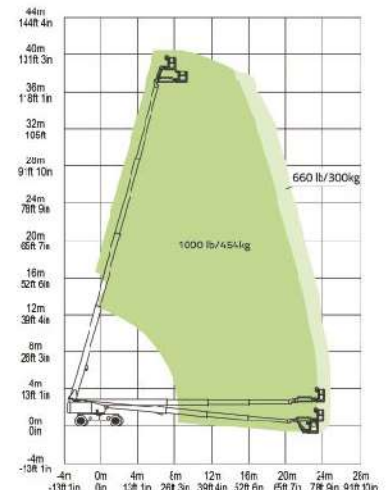
ZT34J/ZT38J

Comply with CE Standard

Model	ZT34J(ANSI/CSA)		ZT38J	
	Imperial	Metric	Imperial	Metric
Size				
Work Height	118ft 1in	36m	131ft 11in	40.2m
Platform Height	111ft 7in	34m	125ft 4in	38.2m
Horizontal Outreach	79ft 5in	24.2m	82ft	25m
A - Stowed Length	44ft 3in	13.50m	40ft 4in	12.3m
B - Stowed Width	8ft 2in	2.49m	8ft 2in	2.49m
C - Stowed Height	9ft 10in	3m	9ft 10in	3m
D - Platform Length	8ft	2.44m	8ft	2.44m
E - Platform Width	3ft	0.91m	3ft	0.91m
F - Wheelbase	12ft 6in	3.81m	12ft 6in	3.81m
G - Ground Clearance	1ft 4in	0.41m	1ft 4in	0.41m
Performance				
Platform Capacity (Unrestricted/Restricted)	660/1000lb	300/454kg	660/1000lb	300/454kg
Drive Speed (Stowed)	3.42mph	5.5km/h	3.42mph	5.5km/h
Gradeability	45%(24°)		45%(24°)	
Turning Radius (Inside)	9ft 2in/14ft 5in	2.8/4.4m	9ft 2in/14ft 5in	2.8/4.4m
Turning Radius (Outside)	20ft 4in/21ft 8in	6.2/6.6m	20ft 4in/21ft 8in	6.2/6.6m
Turntable Swing	360° continuous		360° continuous	
Platform Rotation	±90°		±90°	
Tail Swing	6ft 2in	1.88m	7ft 1in	2.16m
lib (Range of Articulation)	130°(-55°~75°)		135°(-60°~75°)	
Max. Working Slope	3°		3°	
Max. Wind Speed	28mph	12.5m/s	28mph	12.5m/s
Power				
Engine	Cummins QSF2.8 Kubota V2607		Cummins QSF2.8 Kubota V2607	
Fuel Tank Capacity	52.8 (us gal)	200L	52.8 (us gal)	200L
Control Voltage	12V DC		12V DC	
Hydraulic Tank Capacity	66 (us gal)	250L	66 (us gal)	250L
Drive Mode	4WD		4WD	
Steering Mode	Four wheels/Front wheel/Crab		Four wheels/Front wheel/Crab	
Tire				
Type	IN445/50D710 Foam-filled Tires		IN445/50D710 Foam-filled Tires	
Weight				
Gross	42328lb	19200kg	45591lb	20680kg



Range of Motion ZT34J



Range of Motion ZT38J

ZOOMLION

TELESCOPIC BOOM LIFTS

ZT42J

Comply with CE Standard

FEATURES

Standard Features

Horn
Proportional control
All motion alarm
Flashing amber beacon
Self-closing entry gate
Emergency descent system
Emergency stop button
Auto-leveling system
On-board diagnostic system
Tilt protection system
Oscillating axle
Load sensing system
4.3' LED display
Swing-out engine tray

Accessories & Options

- ▶ Platform work lights
- ▶ Anti-collision device
- ▶ AC power to platform
- ▶ Outrigger in-situ telescopic function

HIGHLIGHTS

- ▶ Perform dual capacity design, up to 660/1000lb(300/454kg)
- ▶ Rough terrain chassis features swing axle function, easy to achieve 45% gradeability
- ▶ Creative outrigger telescopic method; strong field applicability, low telescopic failure rate, and effective prevention of abnormal tire wear
- ▶ Smooth & stable boom extension, the telescopic efficiency of the boom is increased by 30% compared with that of the double-cylinder telescopic boom
- ▶ Better work envelop performance, 10% larger than competitor
- ▶ Zoomlion AWM Remote Monitoring and Rental Management System
- ▶ R-shaped slider and U-shaped channel steel design at the bottom of the boom, effectively reducing the lateral deflection of the boom
- ▶ U-shaped boom design effectively reduces the weight of the boom and deflection, and provides better machine stability
- ▶ Jib rotary function provides larger working range and more flexible motion
- ▶ Swing-out engine tray



ACCESS WITH ZOOMLION GREEN

Phone: 0086(731)-88353680 0086(731)-88250971
E-mail: awm@zoomlion.com

Add: ZOOMLION Wangcheng Industrial Park, Tengfei Road 997, Changsha, Hunan, China
Web: www.en.zoomlion.com

ZOOMLION

TELESCOPIC BOOM LIFTS

ZT42J

Comply with CE Standard

Model	ZT42J	
	Imperial	Metric
Size		
Work Height	144ft 7in	44.08m
Platform Height	138ft 1in	42.08m
Horizontal Outreach	82ft	25m
A - Stowed Length	42ft 8in	13m
B - Stowed Width	8ft 2in	2.49m
C - Stowed Height	9ft 10in	3m
D - Platform Length	8ft	2.44m
E - Platform Width	3ft	0.91m
F - Wheelbase	12ft 6in	3.81m
G - Ground Clearance	1ft 4in	0.41m
Performance		
Platform Capacity (Unrestricted/Restricted)	660/1000lb	300/454kg
Drive Speed (Stowed)	3.23mph	5.2km/h
Gradeability	45%(24°)	
Turning Radius (Inside)	10ft 10in/25ft 3in	3.3/7.7m
Turning Radius (Outside)	26ft 11in/35ft 5in	8.2/10.8m
Turntable Swing	360° continuous	
Platform Rotation	±90°	
Tail Swing	7ft 9in	2.36m
Jib (Range of Articulation)	130° (-55° ~ 75°)	
Max. Working Slope	3°	
Max. Wind Speed	28mph	12.5m/s
Power		
Engine	Cummins QSF2.8 / Kubota V2607	
Fuel Tank Capacity	52.8gal	200L
Control Voltage	12V DC	
Hydraulic Tank Capacity	66gal	250L
Drive Mode	4WD	
Steering Mode	Four wheels/Front wheel/Crab	
Tire		
Type	IN445/50D710 Foam-filled Tires	
Weight		
Gross	48281lb	21900kg

