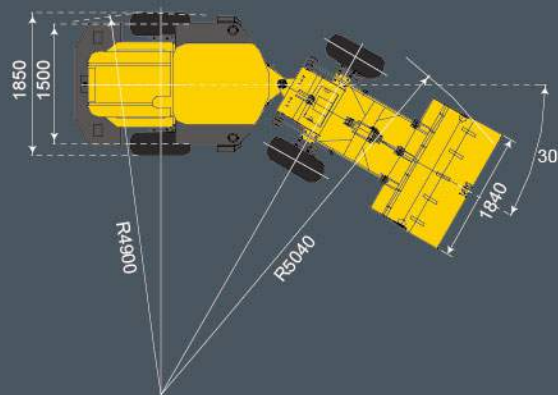
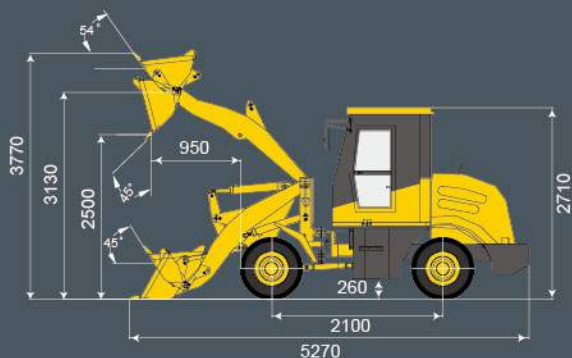




HL 915

*MANY CONDITIONS AND
COMPOUND WHEEL LOADER*

HELI
LIFTING THE FUTURE



ITEM	PARAMETER	UNIT	
Rated load	1500	kg	
Rated bucket capacity	0.7	m ³	
Dumping height(45°dumping angle)	2500	mm	
Dumping distance(45°dumping angle)	950	mm	
Max.breakout force	36.8	kN	
Max.traction force	15	kN	
Dimension(L*W*H)	5270x1840x2710	mm	
Operating weight	3500	kg	
Raise time(full load)	≤5.5	s	
Hydraulic time	≤9	s	
Steering angle	30°±1°	°	
Min.turning radius(Outside of wheel)	4900	mm	
Gradeability	30	°	
Wheelbase	2100	mm	
Wheel tread	1500	mm	
Travel speed	Forward (I / II gear)	8/16	km/h
Travel speed	Reverse	8/16	km/h
Engine Model	Xinchai A498BT1		
Rated power	37kw@2200r/min		
Tire size	12-16.5 (14-17.5)		

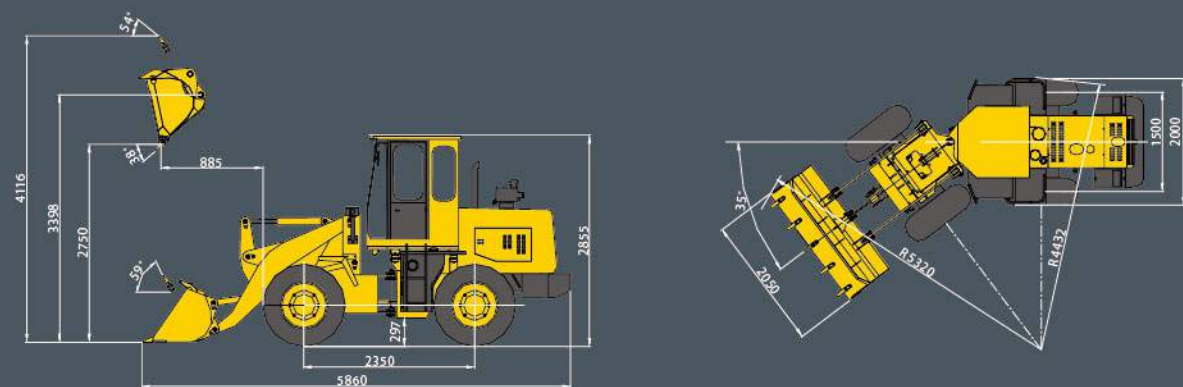
Standard configuration	Optional Configuration
Xinchai A498BT1 Diesel Engine	Commins B3.3-C60 Engine
Automatic transmission with torque converter	1.0m3 Bucket
Driving axle with disc brake	Flexible cable control for hydraulic system
Quick Coupler	Air conditioner
Pilot control for hydraulic system (Joystick)	

- For staying ahead of competitions by constant upgrading of machinery and technology,
- HELI have the rights to update details of specifications and design before inform end users.

ANHUI HELI CO., LTD.

ADD: No.668 Fang Xing Street, Hefei, Anhui, China
 TEL: (0086) 551-63639531
 FAX: (0086) 551-63639966

E-MAIL: heli@helichina.net
 WEBSITE: www.heliloader.com



HL920

MANY CONFIGIONS AND
COMPOUND WHEEL LOADER

ITEM	PARAMETER	UNIT	
Rated load	2000	kg	
Rated bucket capacity	1	m ³	
Dumping height(45°dumping angle)	2750	mm	
Dumping distance(45°dumping angle)	885	mm	
Max.breakout force	60	kN	
Max.traction force	50	kN	
Dimension(L*W*H)	5860*2050*2855	mm	
Operating weight	5560	kg	
Raise time(full load)	5.5	s	
Hydraulic time	11	s	
Steering angle	35±1	°	
Min.turning radius(Outside of wheel)	4432	mm	
Min.turning radius(Outside of bucket)	5320	mm	
Gradeability	30	°	
Wheelbase	2335	mm	
Wheel tread	1500	mm	
Travel speed	Forward(I / II / gear)	10/24	km/h
Travel speed	reverse(I / II gear)	10/24	km/h
Engine Model	Cummins 4BT3.9-C100		
Rated power	75kw@2400r/min		
Tire size	16/70-20		

Standard configuration		Optional configuration	
Cummins 4BT3.9-C100	Pilot control for hydraulic system (Joystick)	YTO LR4B3-24 engine	Quick Coupler
Automatic transmission with torque converter		2940,3200mm Dumping height	0.7m ³ ,1.0m ³ ,1.2m ³ ,1.5m ³ Bucket
Driving axle with disc brake		Wood Clamp	Flexible cable control for hydraulic system
2750 mm dumping height		Grass Clamp	Cabin with skylight
Fan		Crusher	Air conditioner

- For staying ahead of competitions by constant upgrading of machinery and technology,
- HELI have the rights to update details of specifications and design before inform end users.

HELI ANHUI HELI CO.,LTD.

ADD: No.668 Fang Xing Street, Hefei, Anhui, China
TEL: (0086) 551-63639531
FAX: (0086) 551-63639966

E-MAIL: heli@helichina.net
WEBSITE: www.heliloader.com

© 2016 heli copyright
Catalog No.2016-04-C HELI Print



HELI
LIFTING THE FUTURE



ABSTRACT

HL920 loader is a new generation of many complex condition small loader, Widely used in construction sites, underground mining, and municipal construction, gardens, rural or urban construction, etc, Can shovel loading and short-distance shipping scarification, sand, coal, garbage and other loose material, also can traction, flat, accumulation and other work, is a versatile and efficient construction machinery.

PERFORMANCE

- > Enhance your comfort, operation, and visibility.
- > All systems perfect match, make the machine has a better performance, maximize production.
- > Design with 35° maximum steering angle, specially suitable for working under strait site.
- > Optimal working device, with big breakout force, high fill-ability and high working efficiency

HIGH RELIABILITY

- > Adopt international advanced technology, high reliability of posture drive axle and rear axle oscillation is larger, the support stiffness is good, through the performance is strong, especially suitable for working in the complex ground environment.
- > Front and rear machine body using the frame structure, strong rigidity, good reliability, key size of hinge processed on specialized machine, high precision. Main hose of hydraulic system with rubber protection, reduce hose wear.
- > optimization designed front drive axle brake pliers install location, brake pliers cooling condition is good, high reliability, maintenance is convenient.
- > The machine start with neutral protection function, reduce misoperation brings hidden trouble.

OPTIONAL



HL 920

MANY CONFITIONS AND COMPOUND WHEEL LOADER

CONVENIENT MAINTAINABILITY

- > Big openable engine cover, daily maintenance of the engine and radiator is more convenient.
- > Convenient injection method of the lubrication oil, it is easy to fill with lubricating oil.
- > Fuel tank with double indicator, focus on the machine usage in real time Scientific design of the fuel tank filler, filling oil is convenient

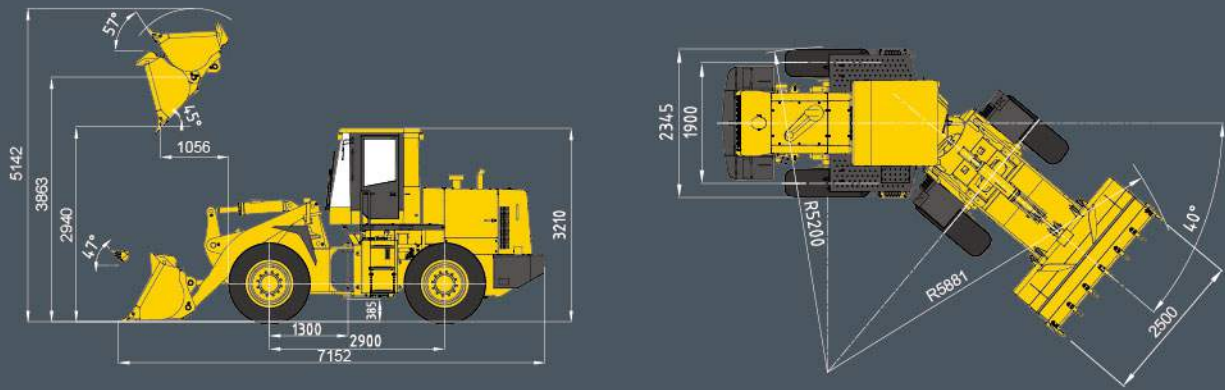
ERGONOMICALLY DESIGN

- > Gear selector control handle is decorated in the left of steering box, gear shift is convenient and quick.
- > Wiper and trun light handle is decorated in the right of steering box, operation is convenient.

QUALITY CONTROL SYSTEM

- > HELI have advanced vehicle test ground, in order to confirm the vehicle have the best quality, the truck go through comprehensive experimental "Including: Breakout and traction force test, shape "8" running test, ramp test and Strengthen working test. Full testing the responsibility of the transmission and the brake system and the leakproofness of the vehicle, Guarantee the truck with With excellent quality."





HL 933 II

HEAVY-DUTY WHEEL LOADER



ITEM	PARAMETER	UNIT
Rated load	3500	kg
Rated bucket capacity	2.0	m³
Dumping height(45° dumping angle)	2940	mm
Dumping distance(45° dumping angle)	1056	mm
Max.breakout force	100	kN
Max.traction force	92	kN
Dimension(L*W*H)	7152*2500*3210	mm
Operating weight	10600	kg
Raise time(full load)	5.2	s
Hydraulic time	9.4	s
Steering angle	±40	°
Min.turning radius(Outside of wheel)	5200	mm
Min.turning radius(Outside of bucket)	5881	mm
Gradeability	30	°
Wheelbase	2900	mm
Wheel tread	1900	mm
Travel speed Forward(I / II / III / IV gear)	7.8/13/25/38	km/h
Travel speed reverse(I / II gear)	9.5/28	km/h
Engine Model	Weichai Deutz WP6G125E22	
Rated power	92kw@2200r/min	
Tire size	17.5-25-12PR	

Standard configuration	Optional configuration	Fill Capacity
Weichai Deutz WP6G125E22	3210mm dumping height	Cummins 6BT5.9 engine
2940mm dumping height	Wood clamp	Heater/Air-condition
Cabin with fan	Grass clamp	Colour type
Push-pull flexible shaft control	Pallet forks	Pilot Operated Control
2.0m³ bucket	1.5m³ rock bucket	for Hydraulic System
	1.5m³ bucket	with Joystick
	1.7m³ bucket	

- For staying ahead of competitions by constant upgrading of machinery and technology,
- HELI have the rights to update details of specifications and design before inform end users.

ADD: No.668 Fang Xing Street, Hefei, Anhui, China
 TEL: (0086) 551-63639531
 FAX: (0086) 551-63639966

E-MAIL: heli@helichina.net
 WEBSITE: www.heliloader.com

© 2016 heli copyright
 Catalog No.2016-03-C HELI Print

HELI
 LIFTING THE FUTURE



ABSTRACT

HL933 II series loader, is the long wheelbase, many conditions, overloading model loader, high configuration, good reliability, high efficiency, good stability, big breakout force, speed fast, hydraulic time is short, strong climbing ability, operation comfort and convenient maintenance, etc.

PERFORMANCE

- > Large maintenance space, daily maintenance convenient and quick.
- > The scientific and reasonable system matching with high reliability, low failure rate.
- > Long wheelbase(2900mm), frame 40 degrees, large turning angle designed, wide scope of operation, high efficiency and flexibility, special for heavy condition.
- > Optimal working device, with big breakout force, high fill-ability and high working efficiency.

HIGH RELIABILITY

- > Adopt international advanced technology, high reliability of posture drive axle and rear axle oscillation is larger, the support stiffness is good, through the performance is strong, especially suitable for working in the complex ground environment.
- > The high pressure hose all adopt imported brand rubber hose, good reliability, long service life.
- > All the working device hinge points adopts double side seal, lubrication condition of the internal articulated is better, less wear and tear, extending the service life of the pin shaft and shaft sleeve.
- > The hydraulic component are the domestic well-known brand product, with high quality stability, low failure rate.
- > Hydraulic system had been filtered for each machine, Greatly improves the cleanliness of hydraulic system, effectively improved the reliability of the hydraulic system.
- > Electrophoretic primer processing technology, greatly increasing the rust prevention capacity.

HL933 II

HEAVY-DUTY WHEEL LOADER

CONVENIENT MAINTAINABILITY

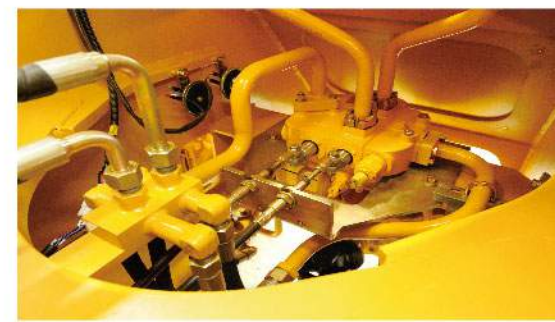
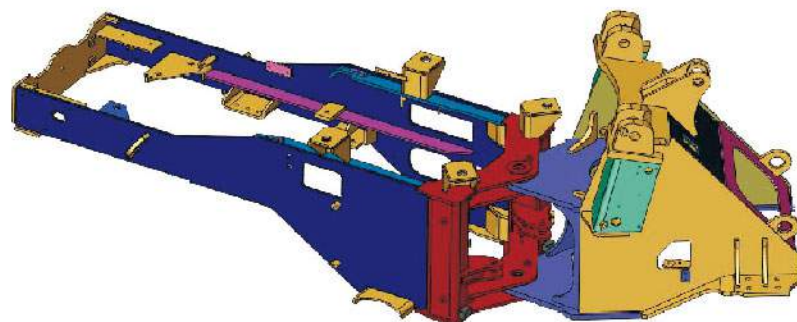
- > VARTA maintenance-free battery, reliable quality, long service life.
- > Waterproof and anti-corrosion connectors of electric system, accommodate to operating environment with high corrosion and dust.
- > Reasonable designed of the piping system, the pipe going smooth, simple maintenance and good reliability.
- > Centralized oil and water drain design, convenient injection method of the lubrication oil, easy for maintenance.
- > Big openable engine cover and rotatable engine cover with guard fence design in the rear of engine cover.

ERGONOMICALLY DESIGN

- > Perfect instrument monitoring system, acousto-optic dual monitor functions.
- > Optimization designed operating control system, comfortable operation, the driver not easy fatigued.

QUALITY CONTROL SYSTEM

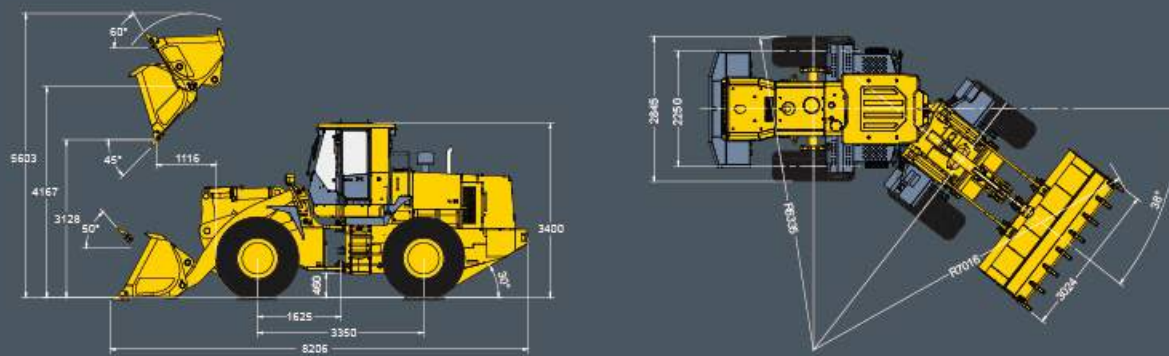
- > HELI have advanced vehicle test ground, in order to confirm the vehicle have the best quality, the truck go through comprehensive experimental.
- > Including: Breakout and traction force test, shape "8" running test, ramp test and Strengthen working test. Full testing the responsibility of the transmission and the brake system and the leakproofness of the vehicle, Guarantee the truck with With excellent quality.





HL956 II

HEAVY-DUTY WHEEL LOADER



ITEM	PARAMETER	UNIT
Rated load	5000	kg
Rated bucket capacity	3	m ³
Dumping height	3128	mm
Dumping distance	1116	mm
Max. breakout force	176	kN
Max. traction force	164	kN
Dimension (L * W * H)	8206×3024×3400	mm
Operating weight	16600	kg
Raise time (full load)	≤5.5	s
Hydraulic cycle time	≤9	s
Steering angle	±38	°
Min. turning radius (Outside of wheel)	6335	mm
Min. turning radius (Outside of bucket)	7016	mm
Gradeability	30	°
Wheelbase	3350	mm
Wheel tread	2250	mm
Travel speed Forward (I/II gear)	11.5/40	km/h
Travel speed Reverse (I gear)	16	km/h
Engine Model	SDEC SC11CB220G2B1 engine (China CAT engine)	
Rated power	162kw@2200r/min	
Tire Size	23.5-25-16PR	

Standard configuration		Optional configuration	
SDEC SC11CB220G2B1 engine (China CAT engine)	Hydraulic steering limit	CUMMINS engine	ROPS/FOPS cabin
Hangzhou Advance double torque converter automatic transmission	3.0 m ³ bucket	Pilot control for hydraulic system with Joystick	Weichai WD10G220E21 engine
Mentor / HELI driving axle	3128 mm dumping height	3.5 ~ 4.5 m3 big bucket	
Soft cable control for hydraulic system		2.5 m3 rock bucket	
Heater		3495mm high dumping height	
Suspension seat		Air conditioner	
Luxury wide-view cabin		Wood clamp, grass clamp, pallet forks, sweeper.	

- For staying ahead of competitors by constant upgrading of machinery and technology, HELI have the rights to update details of specifications and design before inform end users.

ADD: No.8 Baizhang Road, Economic and Development Zone, Hefei, Anhui, China
 TEL: (0086) 551-63639458

FAX: (0086) 551-63639966
 E-MAIL: heli@helichina.net
 WEBSITE: www.helichina.com

© 2013 heli copyright
 Catalog No.2013-12-C HELI Print



HL956 II

HEAVY-DUTY WHEEL LOADER

HELI
 LIFTING THE FUTURE

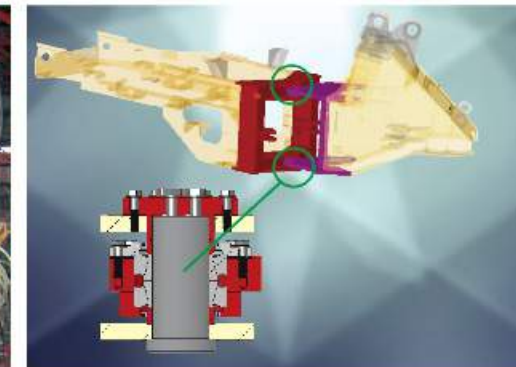


ERGONOMICALLY DESIGN

- > Large space panoramic driving cabin; dust prevention, shock absorption and noise reduction; Built-in rear view mirror. Improve the comfortableness and safety.
- > Air conditioner, multi wind outlets, front & rear defrosters, help to care the driver comprehensively.
- > Optimized design for cabin passageway, more safe and convenient to get off / get in cabin.

CONVENIENT MAINTAINABILITY

- > Big openable engine cover and rotatable engine cover with guard fence design in the rear of engine cover.
- > The instrument has the fuel indication function, which can real-time monitor the fuel quantity in the fuel tank.
- > The hydraulic oil tank is set on the top of engine hood; Perfect space on both sides of rear chassis for maintenance.
- > Convenient injection method of the lubricating oil; easy to fill with lubricating oil.
- > Centralized oil drain design; it is more convenient to change engine oil and hydraulic oil.



HELI HELI, LIFTING THE FUTURE

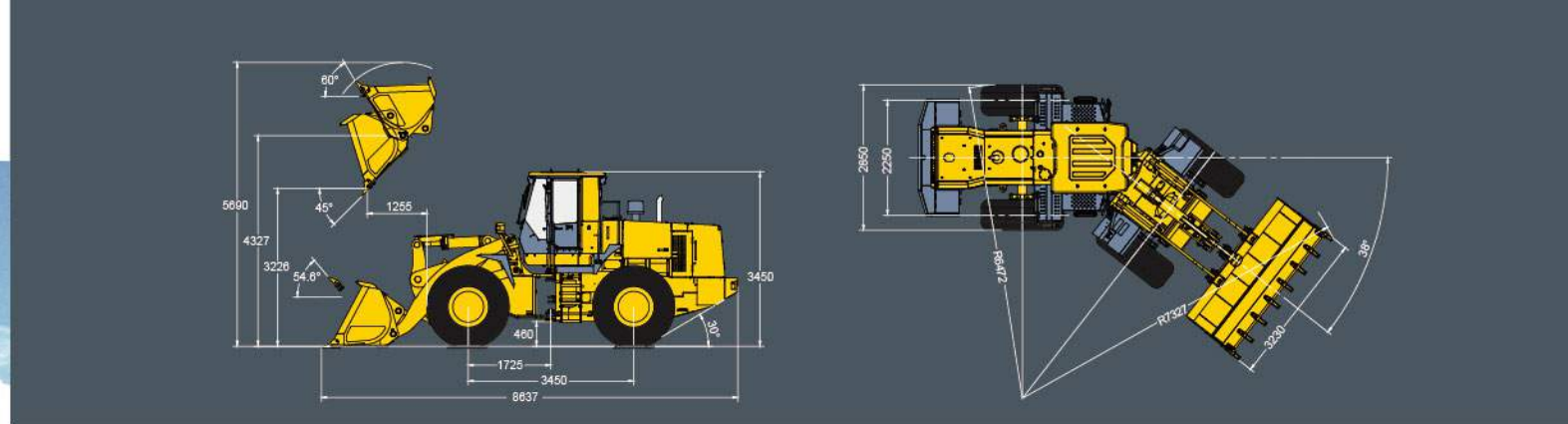


PERFORMANCE

- > The design is based on the heavy load condition, especially suitable in the mine and other heavy load conditions.
- > Optimal working device, with big breakout force, high fill-ability and high working efficiency.
- > Long wheelbase, large steering angle and steering hinge point is alignment arrangement, increase work efficiency and reduce the degree of tire wear.
- > All systems of the machine had been matched perfectly, with higher reliability, lower fault rate and very good heat balance.
- > The raise time with full load is less than 5.5s, high efficiency.

HIGH RELIABILITY

- > Box structure framework of front and rear chassises, resist torsion effectively and increase its durability.
- > Tapered roller bearing used in the hinge of front & rear chassises, ensure high reliability.
- > Optimized radiator. Always keeping cooling system working very well.
- > Cradle type rear driving axle, with wide swing angle and big support bearing.
- > In-shift split type caliper brake system. Convenient and fast for maintenance.
- > Electrophoretic primer processing technology, greatly increasing the rust prevention capacity.
- > Hydraulic system had been filtered for each machine. Greatly improved the cleanness of hydraulic system.
- > VARTA maintenance-free batteries to provide better reliability. Waterproof and anti-corrosion connectors of electric system, accommodate to operating environment with high corrosion and dust.



HL 968

HEAVY-DUTY WHEEL LOADER

HL 968

HEAVY-DUTY WHEEL LOADER

HL968 series loader is a new generation of loader with 6 Tons heavy duty wheel loader,super heavy type. With high efficiency,high reliability,machine low noise, good safety and convenient maintenance.The machine high efficiency, energy saving, working condition of overloading has good stability and big breakout force, etc.

ITEM	PARAMETER	UNIT
Rated load	6000	kg
Rated bucket capacity	3.5	m ³
Dumping height(45°dumping angle)	3226	mm
Dumping distance(45°dumping angle)	1255	mm
Max.breakout force	203	kN
Max.traction force	170	kN
Dimension(L*W*H)	8637*3230*3450	mm
Operating weight	19600	kg
Raise time(full load)	6.2	s
Hydraulic time	10.9	s
Steering angle	±38	°
Min.turning radius(Outside of wheel)	6472	mm
Min.turning radius(Outside of bucket)	7327	mm
Gradeability	30	°
Wheelbase	3450	mm
Wheel tread	2250	mm
Travel speed	Forward(I / II / III /IV gear)	7.3/12/24/38
Travel speed	Reverse(I / II /III/IV gear)	7.3/12/24/38
Engine Model	Weichai 10G240E201	
Rated power	178kw@2200r/min	
Tire size	23.5-25-20PR	

STANDARD CONFIGURATION		OPTIONAL CONFIGURATION
Weichai 10G240E201 engine	High-performance seat	SDEC SC11CB240.1G2B1 engine
The world famous ZF transmission	Luxury wide field bridge	3.5m ³ -4.5m ³ bucket
6 tons of reinforced drive axle	Steering hydraulic limit	High discharge device
Pilot control for hydraulic system with joystick	3.5m ³ bucket	ROPS/FOPS Cabin
Flow amplifying steering	3226mm dumping height	
Air conditioner	The radio (with MP3 function)	
Working device automatically limit		

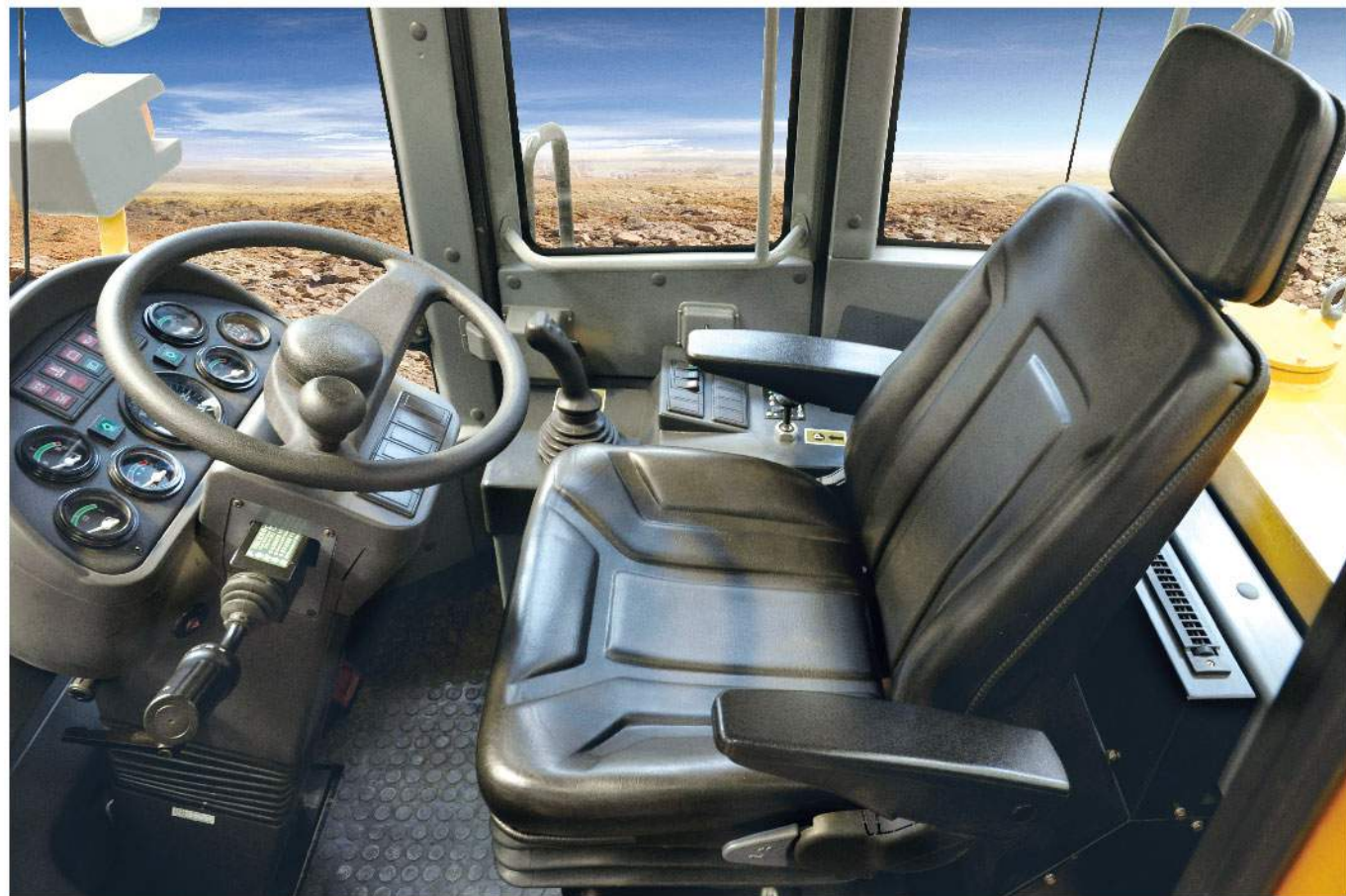
- For staying ahead of competitions by constant upgrading of machinery and technology,
- HELI have the rights to update details of specifications and design before inform end users.

ADD: No.668 Fang Xing Street, Hefei, Anhui, China
 TEL: (0086) 551-63639531
 FAX: (0086) 551-63639966

E-MAIL: heli@helichina.net
 WEBSITE: www.heliloader.com

© 2016 heli copyright
 Catalog No.2016-03-C HELI Print

HELI
 LIFTING THE FUTURE



ERGONOMICALLY DESIGN

- > Large-space panoramic driving cab;dust prevention,shock absorption andnoise reduction;Built-in rear view mirror.Improve the comfortableness and safety.
- > Air conditioner,multi wind outlets help to care the dricer comprehensively.
- > Ergonomically designed buttons on the control box,Pilot control with JOYSITCK for hydraulic system,power shift transmission,easy to operate.

HL 968 HEAVY-DUTY WHEEL LOADER



HELI HELI,LIFTING THE FUTURE

PERFORMANCE

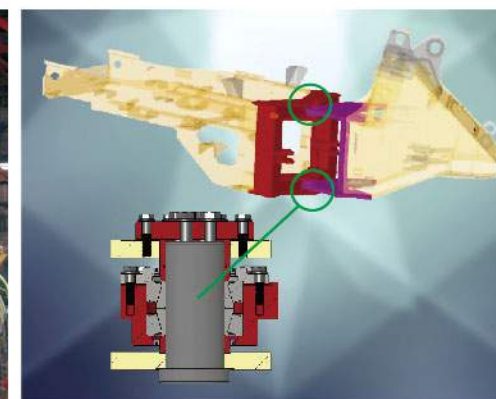
- > The design is based on the heavy load condition, especially suitable in mine and other heavy load conditions.
- > Optimal working device,with big breakout force,high fill-ability and high working efficiency.
- > Long wheelbase, large steering angle and steering hinge point is alignment arrangement, increase work efficiency and reduce the degree of tire wear.
- > First-class quality HELI countershaft electric-hydraulic control transmission, with 4 forward/4 reverse gears and KD function,easy to opearte.
- > Electronic device of automatic bucket leveling and limited lifting position, very useful in the site with limited height.
- > Flow enlarging steering sstem, steering force is very small, and more comfortable when operating.

HIGH RELIABILITY

- > Box structure framework of front and rear chassises,resist torsion effectively and increase its durability.
- > Tapered roller bearing used in the hinge of front & rear chassises, ensure high reliability.
- > Optimal radiator, always keeping cooling system working very well.
- > The hydraulic component are the domestic well-known brand product,with high quality stability, low failure rate
- > Cradle type rear driving axle, with wide swing angle and big support bearing.
- > In-shift split type caliper brake system, convenient and fast for the maintenance.
- > Electrophoretic primer processing technology,greatly increasing the rust prevention capacity.
- > Hydraulic system had been filtered for each machine,Greatly improves the cleanness of hydraulic system, effectively improved the reliability of the hydraulic system.
- > All the working device hinge points adopts double side seal,lubrication condition of the internal articulated is better, less wear and tear, extending the service life of the pin shaft and shaft sleeve.
- > VARTA maintenance-free battery to provide better reliability. Waterproof and anti-corrosion connectors of electric system, accommodate to operating environment with high corrosion and dust.

CONVENIENT MAINTAINABILITY

- > Big openable engine cover and rotatable engine cover with guard fence design in the rear of the engine cover.
- > The instrument has the fuel indication function, which can real-time monitor the fuel quantity in the fuel tank.
- > The hydraulic oil tank is set in the top; The electrical system is the central control box structure and simplifies the circuit.
- > Convenient injection method of the lubricating oil;it is easy to fill with lubricating oil;
- > Centralized oil drain design;it is more convenient to change engine oil and hydraulic oil.
- > Convenient maintenance space inside of the engine hood,the door of the hood have insurance absorber shock ,more safer for maintenance.



HELI

ZL30G

WHEEL LOADER

Rated Power (kw): 97 (132hp)

Operating Weight(kg):10760

Rated Load(kg):3000

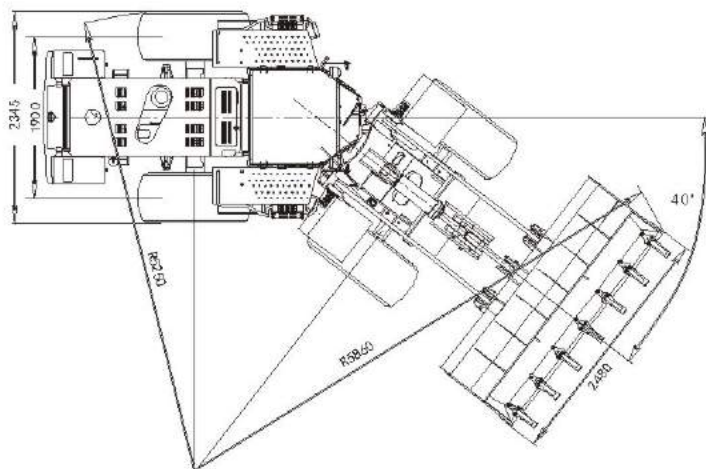
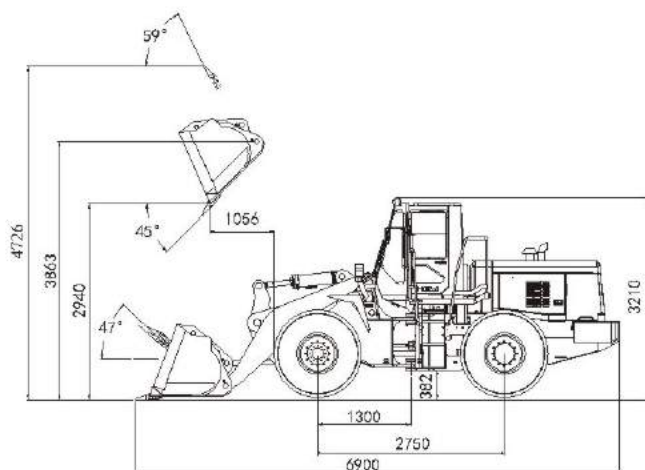
China Well-known Trademark

- ◆ Low fuel-consuming, high-quality Engine has good power performance and big torque reserve, high efficient cooling system, with lower thermal balance temperature ;
- ◆ Pins and sleeve on attachment are sealed with dust-proof , to guarantee the quality of lubrication, the hardness of the pins and shaft sleeves is more higher, lessen lubrication frequency.
- ◆ Fixed-shaft transmission of power gear shift, electrical/hydraulic semiautomatic control, with the function of power to cut off and KD forcible shift gear function, slight shift gear impact, wet-disc parking brakes, which proves the machine' s reliability.
- ◆ Excellent working device hydraulic system, small-displacement system (energy conservation), with lower thermal balance temperature, total hydraulic time short.
- ◆ Oscillatory rear axle accord with the trend of international development, with a high ability of uphill, and has a high reliability.
- ◆ The luxury cab designed ergonomically ensures excellent visibility. The air-conditioner provides operator with a comfortable job environment.
- ◆ Water-proof and dust-proof electrical components, world-famous maintenance-free batteries, with a high stability.



ANHUI HELI CO., LTD.

ZL30G Wheel Loader



ZL30G Wheel Loader technique parameters:

General parameters	Rated load (kg)	3000				Steering system	Type	Articulated load-sensing hydraulic steering system	
	Rated bucket capacity (m ³)	1.7					Steering angle	40°	
	Max. breakout force (kN)	100					Modulated pressure	14Mpa	
	Max. traction force (kN)	104					Brake system	Service brakes	Air-hydraulic actuated brake on four wheels
	Operating weight (kg)	10760						Parking brakes	Auto/manual electronic controlled
	Gradeability (°)	30						Emergency brakes	Using parking brake, the brake with automatically or manual apply
	Dump clearance at full lift and 45° discharge (mm)	2940						Hydraulic System	Type
	Dump reach at full lift and 45° discharge (mm)	1056					Model		Gear pump
Discharge angle (°)	45				Maximum flow	275L@2200rpm			
					Modulated pressure	16Mpa			
Travel speeds	Forward (km/h)	Gear1	Gear2	Gear3	Gear4	Date of capacity	Hydraulic Cycle Time (s)		
		0~7.3	0~13	0~21	0~36		Raise time	Total cycle time	
	Reverse (km/h)	0~8.3	0~15.5	0~24.5	0~39		≤4.6	≤8.6	
Engine	Model	CUMMINS 6BT5.9							
	Rated power (kW)	97 (132hp)@2200							
	Rated torque (Nm/rpm)	560/1500							
	Starting (V)	24							
Transmission device	Model	HELI BZ030							
	Type	Counter shaft power shift transmission							
Drive axle	Main reducer	Spiral bevel, 1-stage reduction							
	Final reducer	Planetary reduction							
Tire standard		17.5-25-12PR							

Specifications and design are subject to change without prior notice.

Machines shown may include optional equipment.

Engine Option: Weichai DEUTZ WP6G125E22

HELI

MANUFACTURER : ANHUI HELI CO., LTD.
DISTRIBUTOR : ANHUI HELI INDUSTRIAL VEHICLE IMPORT & EXPORT CO., LTD.

ADD: No. 668 Fang Xing street, Hefei, Anhui, China

TEL: (0086)551-63639531

FAX: (0086)551-63639966

E_MAIL: heli@helichina.net

WEBSITE: <http://www.heliloader.com>